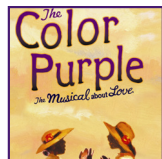
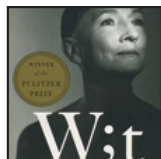
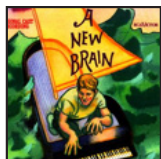


# 2013/14 SEASON TICKET ORDER FORM

"A CenterStage season ticket is arguably the best bargain in town, offering Broadway quality productions and an eclectic repertoire." -Anne Fox Miller



# 1

## PICK A SUBSCRIPTION LEVEL

**Season Ticket**                      \$98 X \_\_\_\_\_                      Total = \$ \_\_\_\_\_  
Includes one ticket to each show in the 2013/14 season with priority seating after sponsors.

**Pick 5 Season Ticket**                      \$80 X \_\_\_\_\_                      Total = \$ \_\_\_\_\_  
CIRCLE FIVE SHOWS:      Legally Blonde | A New Brain | Les Misérables  
   The Best Little Whorehouse in Texas | Wit | The Color Purple | The Sound of Music

## GET MORE PERKS BY SUPPORTING CENTERSTAGE

**Stage Door Sponsor**                      \$550 X \_\_\_\_\_                      Total = \$ \_\_\_\_\_  
Includes two season tickets with priority seating and complimentary concessions (excluding alcohol), two tickets to *Light Up CenterStage*, and recognition in each show playbill and on printed materials. (\$174 tax-deduction)

**Benefactor Sponsor**                      \$300 X \_\_\_\_\_                      Total = \$ \_\_\_\_\_  
Includes one season ticket with priority seating and complimentary concessions (excluding alcohol), one ticket to *Light Up CenterStage*, and recognition in each show playbill and on printed materials. (\$112 tax-deduction)

**Patron Ticket**                      \$150 X \_\_\_\_\_                      Total = \$ \_\_\_\_\_  
Includes one season ticket with priority seating and complimentary concessions (excluding alcohol) and recognition in each show playbill. (\$52 tax-deduction)

# 2

## PICK YOUR WEEK

- First Week
- Second Week

# 3

## PICK YOUR DAY

Evenings at 7:30 p.m. | Matinees at 2 p.m.

- Thursday Night
- Saturday Night
- Sunday Matinee
- Monday Night

## AMOUNT DUE

Total Season Subscriptions = \$ \_\_\_\_\_  
Additional Donation = \$ \_\_\_\_\_  
**GRAND TOTAL** = \$ \_\_\_\_\_

Name \_\_\_\_\_

Address \_\_\_\_\_

City \_\_\_\_\_ State \_\_\_\_\_ Zip \_\_\_\_\_

Phone \_\_\_\_\_ E-mail\* \_\_\_\_\_

(\*to receive special discounts, coupons and announcements)

**PLEASE CHOOSE A PAYMENT OPTION:**

- Check Enclosed (Make payable to JCC/CenterStage)
- Visa / Mastercard

Card # \_\_\_\_\_ Exp. Date \_\_\_\_\_ Vin #/CVV \_\_\_\_\_

Signature \_\_\_\_\_ Date \_\_\_\_\_

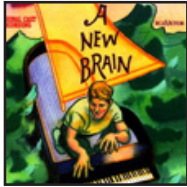
**MAIL FORM AND PAYMENT TO:** CenterStage at the JCC, ATTN: Lenae Price, 3600 Dutchmans Lane Louisville, KY 40205

**BRING COMPLETED FORM AND PAYMENT TO:** JCC Welcome Desk **ORDER BY PHONE:** 502-238-2763



## **LEGALLY BLONDE THE MUSICAL** **JULY 11 - 21, 2013**

Harvard's beloved blonde takes the stage by pink storm in this fun, upbeat musical about self-discovery. Based on the adored movie, LEGALLY BLONDE: THE MUSICAL stays true to form with a peppy score and playful book. This musical is ridiculously enjoyable from start to finish.



## **A NEW BRAIN** **AUGUST 15-25, 2013**

Based on the real life struggle of the author, this show is about making the most out of life in the face of tragedy. When a neurotic, frustrated composer is confronted with a terminal illness, he finds salvation in the healing power of art.



## **LES MISÉRABLES** **OCTOBER 24 - NOVEMBER 10, 2013**

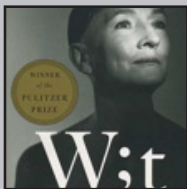
This epic, grand and uplifting tale of passion and destruction in 19th century France packs an emotional wallop that has thrilled audiences all over the world.

**Sponsored by Hilliard Lyons  
Greg & Melinda Vincenti**



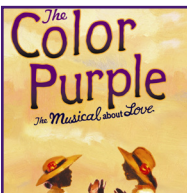
## **THE BEST LITTLE WHOREHOUSE IN TEXAS** **JANUARY 9 - 19, 2014**

This happy go lucky view of small town vice and statewide political side-stepping recounts the good times and the demise of the Chicken Ranch.



## **WIT** **FEBRUARY 13 - FEBRUARY 23, 2014**

This Pulitzer Prize winning drama follows a brilliant and exacting poetry professor as she undergoes experimental treatment for cancer. A scholar who devoted her life to academia, she must now face the irony and injustice of becoming the subject of research.



## **THE COLOR PURPLE** **MARCH 20 - APRIL 6, 2014**

Set to a joyous score featuring jazz, ragtime, gospel, and blues, *The Color Purple* is a story of hope, a testament to the healing power of love, and a celebration of life.



## **THE SOUND OF THE MUSIC** **MAY 8 - 18, 2014**

A classic Rodgers and Hammerstein musical based on the memoir of Maria von Trapp, a nun who becomes the governess to Captain Von Trapp's seven troublesome children. Maria teaches them to sing and Captain Von Trapp to love, but when the Nazis invade Austria, the whole family is forced to flee to safety.

**Sponsored by Hilliard Lyons  
Greg & Melinda Vincenti**