



Jewish Community
of Louisville

Together in Life, Learning & Leadership

Annual Report
July 1, 2011-June 30, 2012

Message from JCL Board Chair David Klein and President/CEO Stu Silberman

At this time last year your Jewish Community of Louisville (JCL) agency was experiencing great forces of change as we strove to integrate and build a vibrant and sustainable platform to deliver relevant and quality programs and services that strengthen the Jewish and broader Louisville Metro communities. Now, with integration completed, key personnel recruited and on-board, a strategic assessment of what we do and how we do it, data to benchmark ourselves against, reduction or elimination of a number of non-critical programs, a fully committed board and staff and partner agencies across town that want to collaborate with us; the JCL is embarking on our next step, growth. And we invite you to be part of it.

Come into our facility to see how bright and clean it is. Our lighting has been upgraded to the latest ecologically friendly technology, fully paid for by grant funding. Look at our new indoor pool area and try our spas and pools – each fully accessible to people with disabilities. Try AquaZumba, take a class on our new spin bikes, or play racquetball or basketball on resurfaced floors. This fall, try a Les Mills Body Pump Class or TRX suspension training – a program for the young, old and in-between that can be used to meet any fitness goal. Our new membership structures add more options to encourage couples and young families to join (we already had senior rates.)

Attend our philanthropic events. This year we brought in bestselling author Mitch Albom, an adventure rabbi, a mentalist, a card shark, hosted a Gary Rosenthal art project and welcomed back Jewish Gold Medal Olympic Athlete Lenny Krayzelburg as part of our Federation Campaign. Thanks to our Campaign Chair Ralph Green and other volunteer leaders including Joe Hertzman, Kate Latts, David and Elizabeth Kaplan, Ariel Kronenberg and others for their effort.

These events are not just for the wealthy – our Campaign succeeds based on each donor contributing what he or she can. Teach your teenagers the power of giving by encouraging them to create a B'nai Tzedek fund with just \$300 from the gifts they received for their bar or bat mitzvahs. We'll contribute an additional \$200 and turn them into instant philanthropists by teaching how to research charities and facilitating dialogue with their peers about where to contribute.

Consider the lasting impact you can make on the community by utilizing one of the investment vehicles available at the Jewish Foundation of Louisville, chaired by Peter Resnik. Whether you'd like to see your contribution at work while you're a part of this community, or leave a gift that will last in perpetuity when you are not,



David Klein



Stu Silberman

we can accommodate your wishes.

Join us at one of our national assemblies. There's nothing like being in a room filled with like-minded people with whom we share so much in common though we've never met, all striving for the same goals. The Jewish Community Centers Association holds their Biennial event every two years. The Jewish Federations of North America convenes a General Assembly each fall. There are programs for public affairs, education, young adults, Partnership2Gether (our Israeli partner community is the Western Galilee region), fundraising, and a host of other opportunities. Try one out – you won't be disappointed.

Join us in our work – by volunteering for a committee, or simply helping out with an event or two – low risk, but high reward. The strength of the JCL is based on the strength of our volunteer participation. What's your interest?

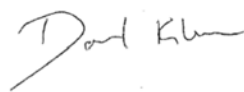
- Israel advocacy? Join our Jewish Community Relations Council.
- College students? The University of Louisville has an active Hillel chapter.
- Seniors? We feed and entertain them here Monday through Friday.
- Youth? Join a camp committee, or teen committee, or young family committee.
- Outreach? Help us welcome newcomers, interfaith families and the un-affiliated in our community into our fold.
- Finance? Choose from audit, finance and investment committees.
- Planning? We have a lot more strategic planning ahead.
- Marketing? Always in search of creative ideas, we have a staff that wants to talk to you.

The list is much broader than the few items above. Let us know and we'll connect you with the right person

to find a good match.

On behalf of the staff and board, thank you for your interest in our agency. If you contribute, thank you for your donation. If you participate, thank you for being a part of our community. If you're interested in being part of our future, thank you for helping.

Together we will build a sustainable, vibrant and inviting Jewish Community in Louisville for generations to come.



Jewish Community of Louisville Award Winners*

**Full biographies of the award winners can be found online at www.jewishlouisville.org.*

Blanche B. Ottenheimer Award: Mervin Aubespín



Mervin Aubespín

The Blanche B. Ottenheimer Award recognizes individuals who have devoted their lives to tikkun olam – the repair of the world – and have made a real difference in Louisville.

Mervin Aubespín was as an artist, reporter and associate editor of the *Courier-Journal*, where he worked for 35 years until his retirement in 2002.

He was best known for his coverage of the African American communities of Louisville and was the *Courier-Journal's* first African American reporter.

He broke into reporting during civil unrest in the city's West End. While employed as an artist, he was escorting a white reporter into the neighborhood when the situation became too tense. As a black man, he was able to still get the story for the newspaper.

While working his way up to an Associate Editor, he always monitored the diversity coverage in the newspaper and served as an advisor for the journalism programs of many schools.

Aubespín also is a former president, vice president and regional director for the National Association for Black Journalists (NABJ). He was a founder of the Louisville chapter of the group and helped establish its first national office in Louisville and a permanent office in Washington D.C.

Aubespín and fellow reporter Kenneth Clay recently published *Two Centuries of Black Louisville, a Photographic History* with Dr. Blaine J. Hudson, the dean of U of L's College of Arts and Sciences.

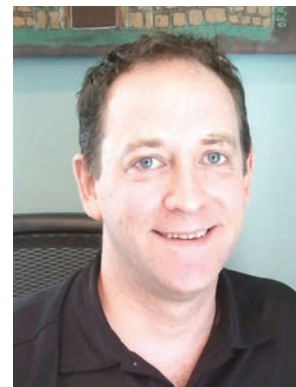
Lewis W. Cole Young Leadership Award: Ariel Kronenberg

The Lewis W. Cole Young Leadership Award recognizes young adults who have taken on leadership responsibilities today and will be the community leaders of tomorrow. The winner will attend the Jewish Federations of North America General Assembly.

Ariel Kronenberg served as the chair of the 2012 Federation Campaign's Young Adult Division (YAD) and will continue in this role for the 2013 Campaign. He hopes to educate the YAD on what the JCL is doing for the community and help get more people involved. He and his wife Faina are both graduates of the Jewish Community Federation's Young Leadership Development Program.

After moving to Louisville in 2004, the couple quickly became community volunteers; helping with Super Sunday telethons and participating in YAD events. In 2007, they chaired Louisville's Yom HaZikaron/Yom HaAtzmaut event and will co-chair the Yom HaAtzmaut event again this year.

Kronenberg is also a member of the Jewish Family and Career Services Board and is a member of Adath Jeshurun.



Ariel Kronenberg

Joseph J. Kaplan Young Leadership Award: Seth and Heather Gladstein



Seth and Heather Gladstein

The Joseph J. Kaplan Young Leadership Award recognizes young adults who have taken on leadership responsibilities today and will be the community leaders of tomorrow. The winner will attend the Jewish Federations of North America General Assembly.

Seth and Heather Gladstein are volunteers in the JCL's Young Adult Division (YAD) of the annual Federation Campaign. They co-chaired YAD's Main Event in 2011 and 2012 and also co-chaired the YAD social event at The Pointe in 2010.

Seth has been a member of the YAD cabinet for the past two years, is a member of the Ben Gurion Society and served on the Jewish Family and Career Services/ Jewish Community Center Republic Bank Golf Challenge's planning committee from 2006-2008.

As teenagers the Gladsteins were already active in their respective Jewish communities. Seth was active in his AZA chapter Pi Tau Pi, and Heather was active in NFTY. They want to continue to create a strong sense of community like the one they grew up in and bring people together through programming and community activities.

The Gladsteins have been members of the Temple since 2005 and hosted a Temple Young Adult event at their home in 2010.

Julie E. Linker Community Relations Young Leadership Award: Bryan Matthews

The Julie E. Linker Community Relations Young Leadership Award recognizes young adults who show outstanding promise and have taken an active interest in and demonstrate devotion to the field of Jewish Community Relations. The winner will attend the Jewish Council for Public Affairs Plenum.

Bryan Matthews is a member of the JCL's Jewish Community Relations Council (JCRC) where he co-chairs the Legislative Committee and is a member of the Executive Committee. Matthews was part of a group which met with Sen. Rand Paul to discuss the legislator's position on cutting funding to Israel.

Matthews also helped the JCRC and the Louisville Chamber Music Society bring the world-renowned Jerusalem String Quartet to Louisville and secured commitment for a return visit.

Matthews is committed to serving the public both through the JCRC and his elected office of Jefferson County Judge/Executive.



Bryan Matthews

Arthur S. Kling Award: Julie Hollander



Julie Hollander

The Arthur S. Kling Award recognizes staff and/or volunteers who have been outstanding performers for the JCC and includes an award that enables the recipient to pursue educational opportunities.

Julie Hollander is the Senior Director of Youth Services and Camp Director at the JCC. Under her watch during the last three years, summer, winter and spring camp numbers have risen and several new Jewish enrichment programs were created.

She also helps oversee the teen program, which continues to grow with more teens attending not only Louisville events, but regional and national conventions as well.

In the future, Hollander plans to continue expanding the JCC's camps, especially for children with disabilities. Five disabled children are attending camp this year in a pilot program which pairs them with an advocate who is also at camp.

Ellen Faye Garmon Award: Rachel Bass

The Ellen Faye Garmon Award was established by the Gamma Kappa Social Club in order to further the work of high schoolers who, in the spirit of Ellen, are involved in Jewish life through BBYO and with the Jewish Community Center, and in the general community. It is supported through the sale of all-occasion cards.

Rachel Bass just completed her sophomore year at Ballard High School where she is a member of the student literary magazine, Beta Club, Chemistry Club, and Spanish Club.

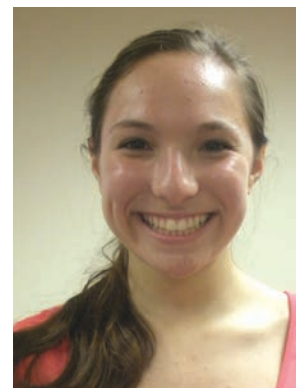
She is very active in her BBYO chapter where she has served as member-in-training (MIT) president and two terms as the chapter mazkira (secretary). She has helped to plan an MIT program and worked as a member of the KIO Quack Committee that produces a regional newsletter. Bass has served on many other BBYO committees including Steering Committee for a Kallah (convention), Publicity Committee, Spirit Committee, and Regional Steering Committee. Currently she serves as the vice president of programming.

Bass is a member of Louisville Girls Leadership, a program that invites one sophomore from each school to participate in seminars about woman's history, rights and leadership roles. She will serve on the steering committee for the program next year.

During the school year, she works as a teacher's aid at Louisville Beit Sefer Yachad and is currently a counselor at JCC Summer Camp.

Bass was chosen to participate in a National Student Leadership conference. She will also be attending a journalism conference at the University of California Berkeley later this summer.

She is a member of the Keneseth Israel Congregation.



Rachel Bass

Stacy Marks Nisenbaum Award: Sophie Reskin

The Stacy Marks Nisenbaum Award was created in her memory by three close friends, Stacy Gordon-Funk, Wendy Snow and Sally Weinberg, who felt that the BBYO scholarship program was the best way to honor her.

Sophie Reskin recently finished her junior year at Ballard High School. She has served as Jay Levine BBG's member-in-training morah for one term and morah for two terms. The morah position includes being in charge of recruitment, retention, and education. Last year she was elected to the position of KIO regional morah and will continue with this position for the coming year.

Last March she represented Louisville and the Kentucky-Indiana-Ohio (KIO) region at the American Israel Public Affairs Committee Policy Conference (AIPAC) in Washington. She also represented the KIO region at the Schusterman AIPAC High School Summit last November.

At Ballard, Reskin is a member of Beta Club, National Honor Society, and Mu Alpha Zeta, a math tutoring club. She has also been a member of Future Business Leaders of America.

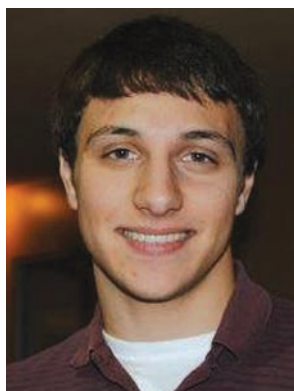
This summer she will be working as a CIT at Camp Livingston, which she has attended for many years. She also works at Dooley's.

She is a member of the Keneseth Israel Congregation.



Sophie Reskin

Stuart Pressma Student Leadership Award: Ben Humphrey



Ben Humphrey

The Stuart Pressma Student Leadership Awards include a cash prize and the winners' names engraved on a plaque at the Jewish Community Center. The awards honor the memory of Stuart Pressma, a young leader and dedicated community volunteer.

Ben Humphrey is a graduate of duPont Manual High School's Math, Science, and Technology magnet program. In his years with BBYO and the Drew Corson AZA chapter, he served two terms as s'gan (programming vice present), and two terms as morah where he was in charge of recruitment and education. He planned many events as s'gan including a kickoff pool party to begin the last year and facilitated teamwork within the chapter.

At duPont Manual, Humphrey was a member of the National Honor Society for two years, Beta Club for one year, and the wrestling team for three years. He also serves on the Student Advisory Board at Gilda's Club.

Humphrey will attend Indiana University in the fall where he plans to major in business at the Kelley School of Business and be active in Hillel.

He is a member of the Temple, helped with the Temple Hebrew School in eighth grade, and received a Confirmation Class Leadership Award.

Stuart Pressma Student Leadership Award: Rachel Klein



Rachel Klein

Rachel Klein is a graduate of the Louisville Collegiate School. With Jay Levine BBG she served as a treasurer and vice president of programming for religious and community service activities. She also worked as a KIO Regional Convention coordinator.

At school, Klein was chosen as a representative for the Louisville Girls Leadership Summit. She also participated in cultural awareness, served in the Student Senate, and performed in her school's production of *The Laramie Project*. She is a member of Pep Club and SADD (Students Against Drunk Driving) which she planned events for including SADD Day and Red Ribbon Week.

She played field hockey and lacrosse throughout high school. In her junior year she made the All-State Lacrosse Team. Her senior year she made the Kentucky Field Hockey Select Second Team and played in the District All-Tournament Team.

Klein has participated in several mitzvah projects including BBYO's Community Service Days and has helped with the Gilda Club Camp.

She will be attending Indiana University in the fall and is leaning towards a major in broadcast journalism. She plans to be active in Hillel.

Stuart Pressman Student Leadership and Joseph Fink Awards: Andrew Segal

The Joseph Fink Award was created in memory of a man who devoted much of his time to making BBYO a rewarding experience for Louisville's Jewish teens. Traditionally, it goes to an outstanding graduating senior who has done a significant amount of community service.

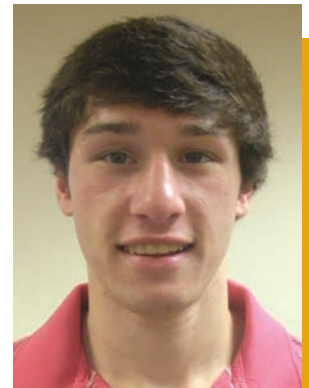
Andrew Segal is a graduate of duPont Manual High School. While with Drew Corson AZA, Segal served as the gizbor (head of fundraising), mazkir (secretary) and shaliach (education vice president).

Segal is proud of his series of talks as shalich when he educated freshman, helping them to understand what it means to be politically involved and why politics are important. As gizbor, he discussed Parkinson's Disease and Dystonia and helped with fundraisers for both conditions.

As part of Keshet Kentucky, Segal is raising money to support the creation of a historical marker honoring the late Justice Louis Brandeis.

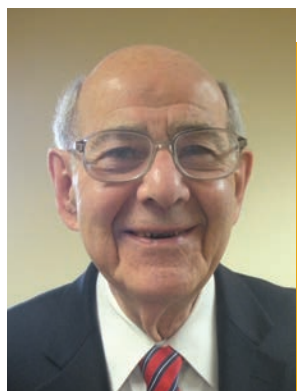
Segal will attend the University of Louisville in the fall and plans to major in political science and be active in Hillel.

Segal also won the Stuart Pressma Student Leadership Award



Andrew Segal

Ronald and Marie Abrams Volunteer of the Year Award: Harry Geller



Harry Geller

The Ronald and Marie Abrams Volunteer of the Year Award, the Jewish Community of Louisville honors an individual who has devoted his/her life to volunteering.

Harry Geller started volunteering for the Jewish community in 1960 when he joined the JCC's Board of Directors, a position he held for 25 years. He also was a Federation Annual Campaign volunteer for 40 years and now sits on the JCL Board.

Geller currently sits on the Planning and Allocation and Nominating committees and helps with the Federation Annual Campaign.

In the past, Geller volunteered as the Senior High School Club Advisor, and for the Senior High, Personnel, Membership, Strategic Planning and Fundraising Committees at the JCC.

He is a regular caller on Super Sunday and also serves on the Day School Committee.

Geller also commits himself to Congregation Adath Jeshurun where he has served on the Board of Directors for 42 years and on the Executive Committee for 25, positions he continues to hold. He is currently a member of AJ's Facility Renovation, Nominating and Fundraising Committees.

He has served in the past on AJ's Membership, Finance and Personnel Committees and 8 years on the Eliahu Academy Board.

Elsie P. Judah Award: Margot Kling

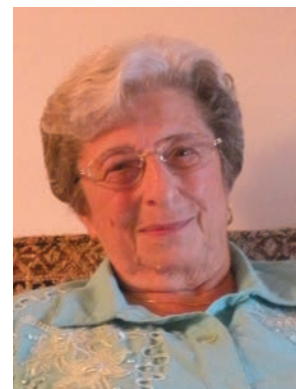
The Elsie P. Judah Award honors an individual who is an outstanding volunteer in the JCL's Senior Adult Department.

Margot Kling chairs the Senior Committee and has been active in the Senior Adult Program at the JCC for many years. She is also a member of the JCRC.

Among her favorite memories of the Senior Adult Department are traveling to Israel and the Smokey Mountains in trips organized by the JCC.

Kling has been active in the Jewish community since the 1950's, when she served on the board of the Conference of Jewish Organizations, a predecessor to the Jewish Community Federation. She has also served on the boards of the Federation, the JCC and the Jewish Social Services Agency (a predecessor of Jewish Family and Career Services).

Kling is a founding member of Temple Shalom and remains on the board. She is also a life member of Hadassah and the National Council of Jewish Women, Louisville Section.



Margot Kling

Jewish Community of Louisville Highlights

2012 Federation Campaign – Campaign Chair Ralph Green, Women’s Philanthropy Chair Kate Latts



Ralph Green



Kate Latts

- Mitch Albom, author of *Tuesdays with Morrie* and award-winning sports journalist was in Louisville to headline two Federation events on December 1. The Major Gifts Event, for donors of \$5,000 or more and the Community Campaign Event for donors of \$360 or more which drew nearly 150 donors to hear him speak at the Henry Clay.



Mitch Albom

- The 2012 Federation Annual Campaign raised \$2,085,261, which the Planning and Allocations Committee will allocate to our local, national and international agencies and partners to meet the needs of our Jewish community here, in Israel and around the world.

- Deborah Grayson Riegel, author of the Jewish Week’s column, “Success without the Tsuris,” was the keynote speaker at the 2012 Federation Campaign Kick-Off on Tuesday, October 4, at Bravo! Cucina Italiana. More than 30 people attended. The program was chaired by Amy Ryan.



Deborah Grayson Riegel



Helene Kramer Longton

- The Super Sunday telethon for the 2012 Federation Campaign took place on Sunday, February 19. The Campaign ensures the JCL can continue and expand

programming options at the JCC, and with Hillel, the Jewish Community Relations Council (JCRC), local educational institutions and the Western Galilee region in Israel through Partnership 2Gether. Helene Kramer Longton chaired the event, which raised \$120,000.

- A Joint Lion of Judah/Pomegranate Event, “A Celebration of Women’s Philanthropy,” featured Gail Norry, national women’s philanthropy chair for the Jewish Federations of North America (JFNA), on November 17. At the end of the evening, \$153,050 had been raised for the 2012 Federation Campaign. Sarah O’Koon hosted the event in her home.



Gail Norry

- Joe Hertzman, Dale and David Hyman and JCL President and CEO Stu Silberman attended a national King David Society event in West Palm Beach, FL on March 26 where they heard former President Bill Clinton speak about Middle East issues impacting Israel and how local Federations around the country must change to remain relevant to younger donors.



KDS Society Event

- The Federation Campaign held a special Men's Evening Out program on March 28 at Horseshow Casino Indiana. More than 70 showed up to hear Sal Piacent, "The Hit Man," a world expert on Casino Game Protection, talk about how casinos catch cheaters. Hunt Schuster and Jeff Tuvlin co-chaired the event.



Sal Piacent

Schwartz, Kim Schwartz and Shane Shaps.

- Karen Abrams received the National Kipnis-Wilson Friedland Award, given by the National Jewish Federation of North America to women leaders in their communities who support the Federation Campaign.



Karen Abrams



Rabbi Jamie Korngold

- The Campaign's Women's Philanthropy Division held a Women's Evening Out at The Olmsted on March 29, where more than 70 women heard Rabbi Jamie Korngold, chief spiritual officer of the Adventure Rabbi Program, discuss her adventures in Judaism. Co-chairs of the event were Janet Hodes, Eleanor



Stewart L. Bromberg

- The JCL named Stewart L. Bromberg as vice president and chief development officer after an extensive nationwide search. Stew comes to us with a great deal of experience in marketing and fundraising for Jewish institutions.

Young Adult Division - Chair Ariel Kronenberg



Ariel Kronenberg

- Many YAD members and their families came to Hogan's Fountain in Cherokee Park on August 28 for the annual YAD End-of-Summer Picnic. Children made crafts, tested their skills at corn hole and everyone tried their luck in a raffle. The JCL provided desserts. Kat Johnson chaired the picnic.

- Members of the Young Adult Division attended the second annual Sushi in the Sukkah event at Adath Jeshurun on October 13. They socialized and participated in a sushi-making class.
- A unique intergenerational Hiddur Mitzvah Project and Ben Gurion Society Campaign event was held on October 23. Families created artistic pieces that became part of custom Judaica pieces forged in the Gary Rosenthal Studio. David and Elizabeth Kaplan chaired Ben Gurion Society.



Jennifer, Jared, Jeff and Ethan Tulvin create custom Judaica pieces at Ben Gurion Society event.



YAD Picnic

- More than 100 YAD members came to the Ice House for YAD Main Event on January 28, where they enjoyed seeing



Jenna Koff and Sidney Friedman

Sidney Friedman perform. Heaven Hill Distilleries

provided an open bar. Seth and Heather Gladstein co-chaired the event.

- YAD's 20s and early 30s group got together in March for a happy hour at Diamond's where they enjoyed appetizers provided by the JCL.
- Young Jewish adults from Louisville joined thousands of active young Jews from across the country at Tribefest in Las Vegas in March. JCL President/CEO Stu Silberman presented a session on recruiting professionals from the corporate world to consider employment in the non-profit world.

JCL Board of Directors and Committees – Board Chair: David Klein



David Klein



Joe Hertzman

- The JCL Board approved recommendations of the Planning and Allocations Committee for allocations from the 2011 JCL Federation Annual Campaign to support Israel, Louisville's Jewish agencies and the national agencies that sustain and support Jewish life. Joe Hertzman chaired the committee and Jay Klempner served as vice chair.



Jay Klempner

- On Friday, June 24, 2011, more than 400 General Electric Technology Department employees put in more than 5,000 hours collectively to transform the JCC campus buildings and grounds by painting and installing new carpets and flooring, mounting new flat-screen TVs in the main cardio court, working around the indoor pool and locker rooms, creating additional program space, dry-walling the



General Electric Renovations transform the JCC

old cafeteria counter in the basement and putting up shelves and cabinets. Outside, they revamped the pavilion, built a ga-ga court, constructed privacy fencing around the outdoor lap pool, refurbished the bleachers and built some picnic tables. Thanks go to GE Project Leader Geoff Renard, who said "GE takes community service work very seriously, it's a big part of what we do." Many donors contributed to making the successful renovation a reality.

- The JCC became a movie studio last July when the film "Tan Lines" was shot on the premises and the grounds. Laura Morton, associate producer and production coordinator, said the director "fell in love with the place the first moment he saw it." He said, "There is something unique and inviting about the JCC."



JCC became a movie studio for the film "Tan Lines"

Jewish Community Relations Council – Chair: Ayala Golding



Ayala Golding

- The JCL/JCRC organized the Jewish community team in October for the Hunger Walk, which began in 1978 as Kentuckiana's first public issue walk. The Hunger Walk raised more than \$100,000 for Dare to Care Food Bank.



The Jewish community joined in the annual Dare to Care Hunger Walk.

- On October 27, Andi Milens, national director of community relations and communications for the Jewish Council for Public Affairs, came to Louisville to provide the local group with an overview of what JCPA does and how it interfaces with local JCRCs like the one in Louisville.



Andi Milens, Marie Abrams, Helene Kramer Longton and Ayala Golding

- The JCL/JCRC and others co-sponsored the U.S. Holocaust Museum's traveling exhibit, "Nazi Persecution of Homosexuals, 1933-1945," at the University of Louisville in September.



Opening of "Nazi Persecution of Homosexuals" exhibit at UofL.

- The JCL's Jewish Community Relations Council and the Jewish Studies Committee of UofL's Division of Humanities teamed up to offer a Jewish Cultural Diversity Week called Shavua Tov from November 14-20. The week included a lecture on "Tel Aviv's Tent City and the Future of Zionism", a screening and discussion of Israel HBO show "Arab Labor" and a concert by the Montreal-based Shtreiml Klezmer band



Shtreiml Klezmer band

- The JCRC hosted their annual Interfaith Chanukah Party at the JCC on Monday, December 19. About 80 members of both the Jewish community and its interfaith community partners attended. Cantors Sharon Hordes and David Lipp entertained with



Interfaith Chanukah Party

traditional and non-traditional Chanukah music. Latkes, applesauce and jelly doughnuts were in ample supply.

- The JCL was among many organizations to help victims of the tornadoes that ripped through southern Indiana and Kentucky on March 2. The JCL established a Tornado Relief Fund and collected over \$25,000 to help victims.
- On May 20, about 25 people gathered from the Jewish and Presbyterian communities to begin a dialogue on the Israeli/Palestinian conflict and to build ties between our two communities. Rev. Betty I. Meadows, the General Presbyter of the Mid-Kentucky Presbytery, acknowledged that even if we differ, it is time to listen. "There is too much anger in the world," she said, "and I am grateful for the opportunity to listen."



Jewish/Presbyterian Dialogue

Jewish Life and Learning

- The Goldstein/Leibson Scholar-in-Residence program presented Dr. Andrea Weiss, Ph.D., co-editor of the popular *The Torah: A*



David and Phyllis Leibson, Dr. Andrea Weiss, Nicole and David Leibson

Woman's Commentary, on February 20-22nd. Dr. Weiss presented four lectures on topics ranging from Why Torah Study Matters to What We Can Learn From King David.



Author Jane Portnoy signing books for the Jewish Festival of the Book.

- The JCL's Jewish Festival of the Book offered a varied program starting on November 2. Authors Jane Portnoy, Melissa Fay Green and Myla Goldberg each spoke and

a local author's reading on November 17th rounded out the program. Allison Schwartz coordinated the program.

- Haim Aronovitz, director of Israel Seminars of the Florence Melton Adult Mini-School Institute and the educational director for the Senior Educators Program at the Melton Centre for Jewish Education at The Hebrew University of Jerusalem, spoke at the Jewish Community Center on January 24. His work focuses on translating site into text and seeking context for both.



One of the Jewish Film Festival's founders, Louis Levy, Filmmaker Stuart Weinstock, Festival Director Marsha Bornstein and Film Festival Committee Chair Keiley Kaster

- February's 14th Annual JCL Jewish Film Festival presented 10 films that offered a wide

variety of entertainment to the community. The most popular was Berlin 36, the story of Jewish Olympic high jumper Gretel Bergmann. Bergmann's cousin, Ann Dorzback and her daughter, Elizabeth Zlotowitz, spoke after the showing.



The Maccabeats at the JCC

- The Maccabeats helped the JCC celebrate Yom HaAtzmaut (Israeli Independence Day) 5772. Hundreds of people packed into the JCC to listen and dance to the a cappella singing group from Yeshiva University. Practicing a little Tikkun-Olam, more than 20 potential donors added their names to the Gift of Life Bone Marrow Registry during the event.



Yom HaShoah Commemoration focused on children.

- The Yom HaShoah Commemoration 2012 on April 18th at The Temple focused on children and the creative work done by Terezin's young prisoners and today's young people whom they touched. Students from Louisville Beit Sefer Yachad (the former Louisville Hebrew School), The Temple Hebrew School, Kentucky Country Day School, Atherton High School and St. Francis of Assisi participated in the program as well as the Louisville Youth Choir. Cindy Schwartz and Fred Whittaker co-chaired the event.

Hillel



Hillel progressive dinner

- Hillel started the year with a progressive dinner on August 30. The 20 students in attendance enjoyed appetizers at the Back Door, dinner at Ramsi's and dessert at the Homemade Ice Cream and Pie Kitchen. The students were from the University of Louisville, Bellarmine University, and Indiana University Southeast. Gariy Ocheretner is UofL chapter president, Bailey Haskell is vice president, and Ben Rubenstein is president of the Bellarmine chapter.
- A group of 10 Hillel members attended the Jewish National Fund's National Conference in Cincinnati September 18 and 19.

- Hillel's office in the Interfaith Center on the UofL Belknap Campus was renovated thanks to a Jewish Hospital HealthCare Services' Jewish Community Excellence Grant.



Hillel's renovated Interfaith Center on UofL Belknap campus

- Twelve local Hillel students attended the General Assembly of JFNA. from November 6-8 in Denver, CO. There, they learned how they could help promote Israel after attending Birthright Israel.
- On February 24, Hillel students organized a Shabbat dinner for students at the home of Janet and Jonathan Hodes, where 15 students enjoyed socializing and a home-cooked vegetarian meal.

Cultural and Performing Arts



Thelma Yellin Big Band

- The Light Up CenterStage Gala was held on Saturday, December 3, at the JCC. This year the gala helped launch a new endeavor, CenterStage Acting Out, to bring theater into schools in the greater Louisville area. CenterStage

Artistic Director John Leffert created the new program. The event raised \$33,652.

- More than 100 people attended an Israeli Jazz Concert at the JCC by the Thelma Yellin School for the Arts. Their 20-person Big Band played a concert at the JCC in December.
- CenterStage launched its newest venture, CenterStage Acting Out, a professional touring children's theater. The troupe performed *Alexander and the Terrible,*



Acting Out



Hairspray

Horrible, No Good, Very Bad Day in 2 public shows and 12 shows at schools throughout the Louisville Area.

- CenterStage had a highly successful season, including *Hairspray* with more than 5 sold out shows and *Little Shop of Horrors*, which was attended by more than 1,300 people.

- CenterStage was awarded Kentucky Derby Festival's President's Award (3rd place) at the Pegasus Parade for their float "A Rainbow of Fun." The float was designed and built by CenterStage volunteers.



CenterStage's Pegasus Parade float

Early Childhood

- Shalom Baby teamed up with Wee Rock to introduce a new music and movement class at the JCC. Two sessions of the class had more than 10 participants each week.



Wee Rock

- The JCC Early Childhood Education Center provided safe learning for more than 75 students all year. On top of the normal curriculum, students also had once a week classes in Spanish, music and Jewish culture. Three and four year-olds also took swimming once a week from the Lenny Krayzelburg Swim Academy.



Lenny Krayzelburg Swim Academy

- More than 150 parents and ECE students came to the

annual Chanukkah Party. Parents made a craft with their children and ate latkes. John Gage also performed with the children.

- Children's Story Hour, in partnership with NCJW continued to grow. Each



Story Hour

month, parents and a few grandparents gathered at the JCC with their children to listen to a story and make a craft project centered around the Jewish calendar.

- In May, the annual Spring Sing was again a great success. Each class performed a song with the help of John Gage. Parents and grandparents could bid on art pieces created by the classes.



Spring Sing

Children



JCC Summer Camp

- Last year's summer camp attracted more than 500 campers, and even more children are enrolled for the 2012 summer.
- Last July, JCC summer campers raised \$1,164 and collected \$400-worth



Campers raised \$1,164 for the JFCS Food Bank.

of donations for the JFCS Food Bank during the second annual Week of Caring and Sharing. Throughout the week, campers ages 16 months through 8th grade participated in many fundraisers to collect donations.



Apple Pickin'

- In October, 35 people attended Apple Pickin', a JCL-sponsored communitywide book club event at Joe Huber's Family Orchard on September 25. Dori Weinstein and 10 students discussed *Yaya & YoYo Sliding into the New Year*, her first book in the series.

- Over Winter Break, more than 100 children in preschool through 5th grade packed the JCC for All the Things You Can Think. Each day was centered on a new book.



Winter Break at the JCC

- The JCC and the J.B. Speed Art Museum's "Renoir to Chagall: Paris and the Allure of Color" exhibit presented a wonderful family activity on Sunday, February 26. Children and families learned about Jewish artist Marc Chagall and his work and played a specially crafted Bingo game.



Chagall family activities.

Teens



J-Serve planted in the new Community Garden.

- The JCC created a permanent Community Garden behind the pavilion on the campus. The garden was the brainchild of Laurence Nibur, Justin Sadle and David Klein. Mayor Greg Fisher called it the first community garden of its kind and he hopes it will serve as a model for other programs. It was started by teens across the community during J-Serve and tended by summer campers. All the fresh fruits and vegetables were donated to Jewish Family & Career Services.
- In October, 30 middle school students went on a weekend trip to Chicago. The group enjoyed an architectural harbor cruise on the Chicago River and visits to the Shedd Aquarium and the Willis Tower.
- The JCL Middle/High School Sports Kickoff drew more than 50 teens to the Center on October 23. The Sports Subcommittee helped plan and organize the day of competition and play that offered a wide variety of sports to all athletic levels and age groups. The committee's goal is to create more athletic opportunities at the JCC and increase participation in the Maccabi Games.



Trip to Chicago

- More than 65 teens (grades 6-12) took part in the JCC's annual J-Serve event on April 15. Projects included painting the JCC's gaga pit and halfway house, planting the JCC's Community Garden, folding bags for Dare to Care and making blankets for the victims of the tornado in Henryville. The JCL received a \$1,800 grant from BBYO for the J-Serve project, which allowed teens to participate in a variety of options during the event.



Teens from three groups worked together at J-Serve.

Senior Adults

- The JCL and the Senior Nutrition Program received a \$5,000 grant from Mazon, a



The Senior Nutrition Program

Jewish Response to Hunger. The grant was one of 286 given to organizations fighting hunger in the U.S., Israel and selected developing nations.

- The JCC's kosher meals program received a \$1,000 grant from the Meals on Wheels Association of



JCC feeds more than 250 seniors each week.

America's Jack and Eleanor Borden Memorial Kosher Meal Fund in March. The JCC feeds more than 250 seniors Kosher lunches each week both at the JCC and through home delivery.

- More than 40 homebound seniors received Purim Gift Baskets in March from the JCC's Senior Adult Social Club. Gift baskets will also be sent during the High Holidays.
- Twenty-six students from Louisville's Beit Sefer Yachad's sixth grade joined 50 seniors for the annual Intergenerational Interfaith Model Seder.



JCC Campers share lunch with seniors.

Partnership 2Gether - Co-Chairs: Drs. Laura and John Klein



Partnership 2Gether mission

- In late February, a Partnership 2Gether (formerly Partnership with Israel) mission with 14 people went to Israel under the leadership of Rabbi Stan Miles along with clergy from two other congregations and additional community leaders. Other members of the Louisville delegation were Cantor Sharon Hordes, Cantor David Lipp, Kathy Karr, Andrea Koven and Judy Sharp. Two cantors from Toledo, OH were also on the trip.

- Five preschool teachers from our Partnership area in Western Galilee came to Louisville in March to meet and share with early education teachers in our community. The group discussed Hava Nagila Gan, a Partnership website where 200 teachers worldwide can exchange ideas and resources on early childhood development.



Preschool teachers from Western Galilee visit Louisville

Health and Wellness

- The JCC brought the Lenny Krayzelburg Swim Academy to Louisville. Four-time Olympic gold medal swimmer Lenny



Lenny Krayzelburg Swim Academy

- Krayzelburg came to town on July 31 to help kick off the program, which teaches people from two months old through seniors to be safe and confident in the water. More than 450 children have entered the program.

- The JCC added Zumba first as a paid class, then as part of the free group fitness offerings. The Latin-dance class averages more than 40 participants 3 times a week.

- The Gators, the JCC Swim Team placed 2nd at Championships in 2011 as a combined team. The boy's team placed first overall, the girl's team placed second.



Gators, the JCC Swim Team

- The JCC continues to upgrade its facility to better serve members. Twenty-eight new top-of-the-line exercise machines (10 ellipticals, 8 treadmills, 5 stair steppers, four stationary bikes and 1 ascent trainer) were installed in mid-August.



Some of the new equipment at JCC

- The JCL and WTS entered into an agreement to manage Fitness and Membership at the JCC. The agreement allows the JCC to leverage WTS' expertise and access to programs developed in other communities. Larry Mestel returned to Louisville and the JCC as senior director of membership and wellness.



Larry Mestel

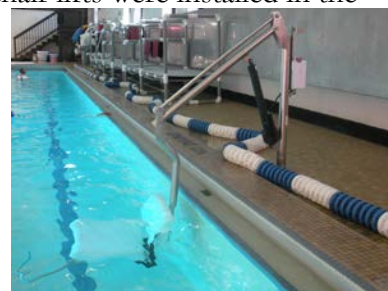
- The JCC started a new program, Trek to Israel. Thirty-nine teams of five JCC members and staff undertook the 6,200 mile journey. Team members earned 15 miles for every 30-minute workout. More than 15 teams completed the trek. Participants exercised more than 7050 hours at the JCC during the program. The program has already been duplicated by other JCCs around the country.

- 21 new spin bikes replaced the older ones in the spin room. Members say the new bikes are more comfortable and love the fact that they are all the same.



Some of the new spin bikes at JCC

- The JCC expanded their Aqua fitness offerings to include new Aqua Bootcamp, Aqua Zumba and Finning classes.
- The JCC renovated all the pools to make them compliant with the Americans with Disabilities Act. In February, new chair lifts were installed in the indoor pool and whirlpools. Chair lifts were also installed in the outdoor pools. A zero-depth entry was created for the outdoor wading pool.



One of the new chair lifts

Membership and Development

- The Republic Bank Golf Challenge, benefitting the JCC and JFCS took place at the Standard Country Club on June 27. This year the event was expanded to include a Tennis Challenge and Bridge Tournament. The event raised more than \$90,000 for the agencies.



Jean Trager, Sonia Levine, Toni Goldman, Denise Fox, Ann Leah Bleiden, Carol Behr, Maxine Switow and Esther Fox pose after the Bridge Tournament.



Andy Present, Ari Schwartz, Reed Weinberg and Greg Davidoff enjoy the Golf Challenge.

- The JCC started a free Member Movie Night in January. More than 30 families watched Disney classics at the JCC and ate popcorn on the last Thursday of every month until May.

- To help improve its programs and services, the JCL turned to its national parent agencies – the Jewish Community Centers Association (JCCA) and the Jewish Federation of North America (JFNA) – for help through consultants and other services. The JCCA surveyed all aspects of the Jewish Community Center to compare results against similar-sized JCCs in the country. The results will also be used as a baseline for next year's survey to chart progress. Gail Zucker, a consultant with JFNA also helped with strategic planning. Jeff Tuvlin chairs the Benchmark Committee, which recommended 5 key areas to focus on for improvement in the coming year.

Jewish Foundation of Louisville - Chair: Peter Resnik



Peter Resnik

- The JCL's Endowment Program was renamed The Jewish Foundation of Louisville in December. The Foundation includes all funds that were part of the Foundation for Planned Giving and all Jewish Community Center Second Century Funds.

- The Foundation has a new chairperson, Peter

Resnik, who along with the reestablished committee provides lay oversight to ensure the funds are being used in accordance with donor intent.

- The JCL completed the reconstitution of all Second Century Funds, fully correcting a problem that occurred several years ago, before the merger of the Jewish Community Federation and the Jewish Community Center.



- The JCL and its Foundation offered several scholarships to help with summer 2012 programs. Scholarships are from Foundation endowments including the Ellen and Milton Cantor Israel Scholarship Fund, the Laura K. Cohen Camp Scholarship, the Miriam and Dennis Fine Beber Camp Memorial Scholarship and the Frankenthal Family Camp Ramah Scholarship.

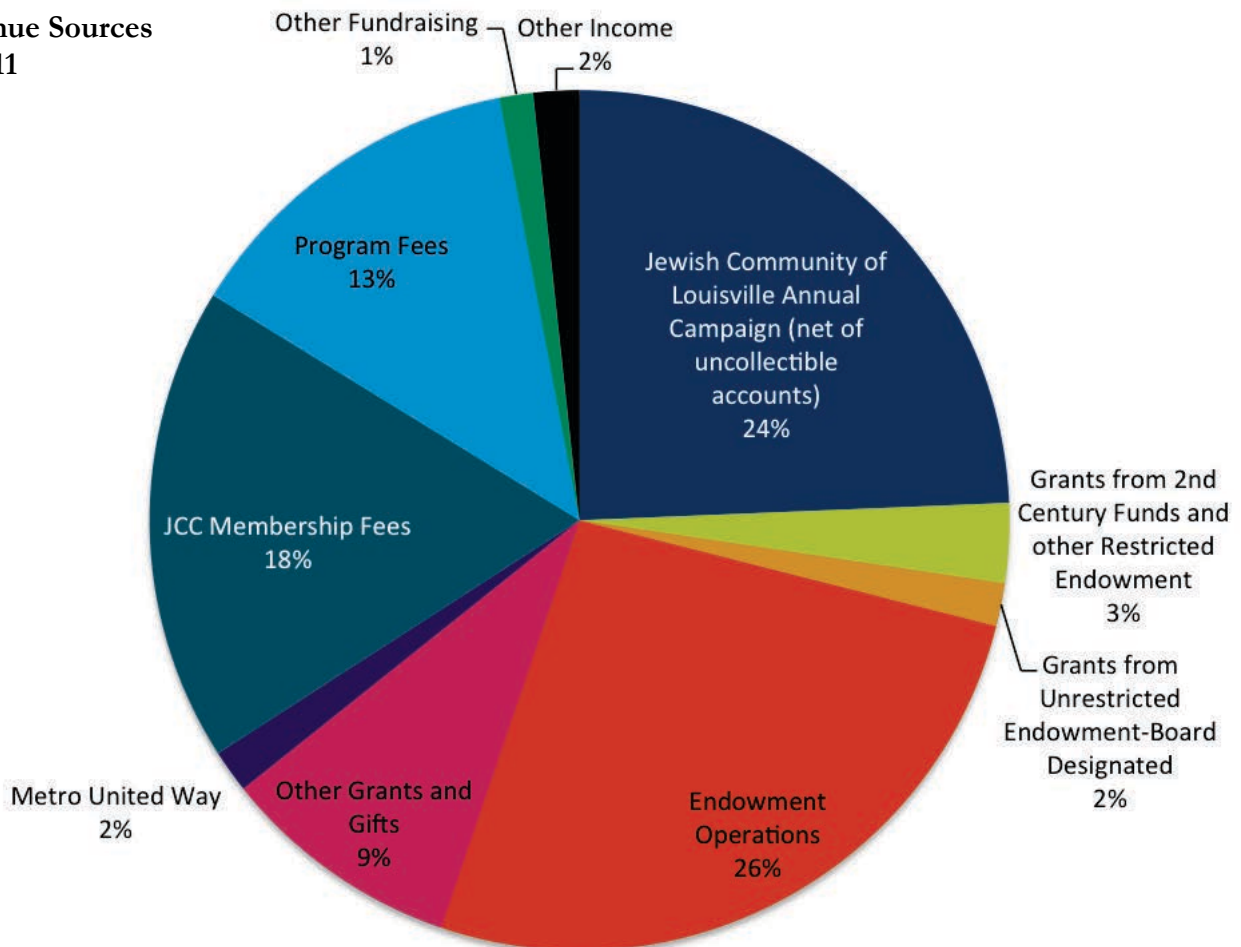


Jewish Community of Louisville Financials 2011-12

Revenues

Jewish Community of Louisville Annual Campaign (net of uncollectible accounts)	\$2,326,042
Grants from 2nd Century Funds and other Restricted Endowment	286,527
Grants from Unrestricted Endowment – Board Designated	153,608
Endowment Operations	2,509,207
Other Grants and Gifts	865,064
Metro United Way	153,713
Membership Fees	1,707,510
Program Fees	1,265,872
Other Fundraising	121,243
Other Income	163,802
Total Revenues	\$ 9,552,588

**JCL
Revenue Sources
2010-11**



Jewish Community of Louisville Financials 2011-12

Distributions

Overseas Allocations

Jewish Federations of North America	
Israel	\$360,607
Other Overseas	120,202
Total Overseas Allocations	\$480,809

Local Agencies

Community Health Insurance Subsidy	\$92,500
High School of Jewish Studies.....	17,982
Louisville Hebrew School.....	48,077
The Temple Hebrew School.....	56,319
Chavurat Shalom	14,985
Louisville Jewish Day School	29,970
Jewish Family and Career Services	247,296
Vaad Hakashruth.....	4,496
Pre-teen/Teen Program Initiative.....	29,970
Total Local Allocations	\$541,595

National Organizations

Agency Alliance	\$23,107
(Includes dues and allocations to: JCPA, JESNA, HIAS, JCCA, the National Conference on Soviet Jewry, National Fund for Jewish Culture and the Association of Jewish Family & Children's Agencies)	
Jewish Communal Service Association	525
National Council of Jewish Women	500
Hillel Consortium.....	20,000
Center for Learning and Leadership (CLAL)	500
Birthright Israel	17,000
Total National Organizations	\$ 61,632

Total Distributions..... \$1,084,036

Expenses

Campaign Expenses	\$ 311,470
Program Services.....	4,526,758
Management and General.....	1,152,851
Occupancy	773,533
Other Fundraising	167,582
General Insurance, Interest and Trust Management Fees.....	342,904
Total Expenses.....	\$ 7,275,098

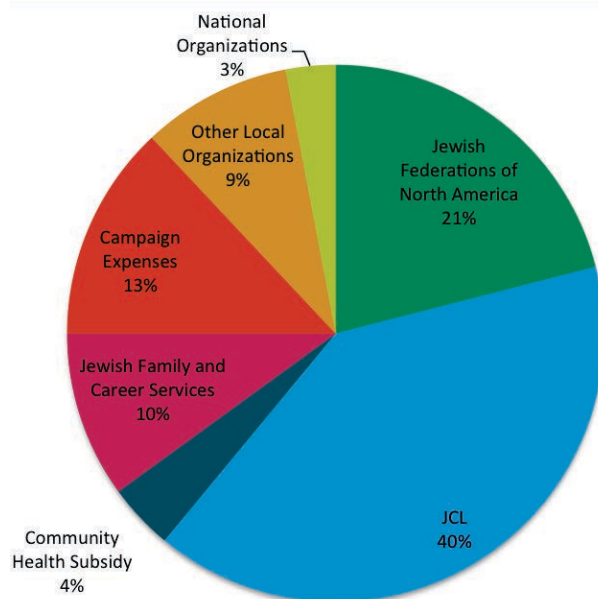
Total Distributions and Expenses..... \$ 8,359,134

Gain..... \$ 1,193,454

Campaign Distribution

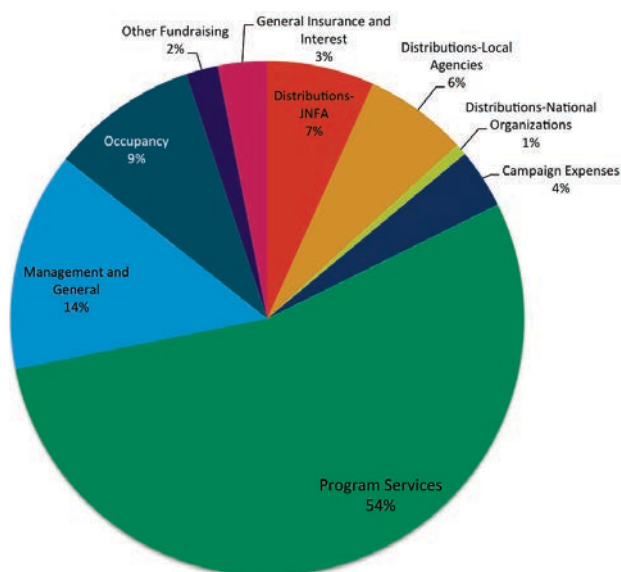
Percentages 2011-12

This chart represents only the distributions made from the dollars raised by the 2011 Annual Campaign.



Expense Percentages 2011-12

The percentages presented in the chart below represent expenses paid from the total JCL budget, which includes revenues from program fees, memberships, Campaign, grants and all other sources.



The Foundation for Planned Giving 2011-12

Assets

Philanthropic Funds.....	\$ 3,842,004
Restricted Funds	5,030,568
Unrestricted Funds.....	4,712,791
Unrestricted but Designated Funds.....	2,109,782
In Trust for Others	2,823,665
Total Foundation Funds as of 06/30/2011.....	\$ 18,518,811

Grants

**Grants from Unrestricted/
Designated Used in Operations** **\$ 153,608**

Grants from Philanthropic and Restricted Funds

Local Jewish Organizations	
Philanthropic Funds donated to Annual Campaign...	\$194,829
Other General Purposes	69,085
JFCS	7,322
JCC	286,527
Education	14,570
Synagogues.....	37,594
Total Local Jewish Organizations Grants	\$609,926
National Jewish Organizations	65,774
Local Secular Organizations	39,541
National Secular Organizations.....	32,475
Total Grants from Philanthropic/Restricted Funds ..	\$747,716

Total Grants **\$901,324**

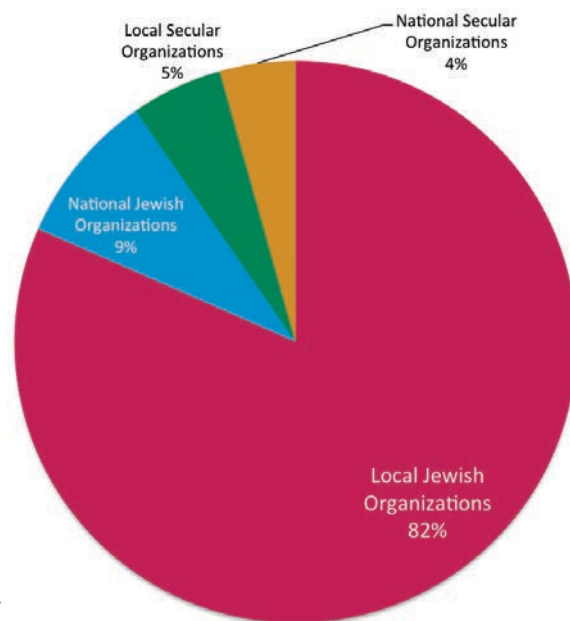
Philanthropic Funds are donor advised funds held by the Foundation for a set time period. During that time, a spending formula determines the dollar amount that the donor-designated individual(s) can donate to approved 501©3 organizations. At the end of the time period, the dollars remaining in the fund go to the Unrestricted Endowment.

Restricted Funds are funds held by the Foundation that were given by the donor with specific requirements as to their use. Most of the funds we hold are permanently restricted, meaning that the income from the fund can be used if the use meets the donor's stated restrictions, but the corpus can't be spent for any purpose.

Unrestricted and Unrestricted but Designated Funds are funds held by the Foundation that were given without any restrictions being placed on them by the donor of the funds. All or portions of those funds can be Designated by the Board of Directors for specific purposes. The Designations can be applied or removed at any time the Board chooses.

Funds held in Trust for Others are funds the Foundation holds on behalf of many of our Jewish Community partners. They pay a small fee for the service, smaller than they would pay to an outside service provider.

Grants from Philanthropic/ Restricted Funds 2011-12



Jewish Community of Louisville Committees

JCL Board of Directors

Officers

David Klein, Chair
Karen Abrams, Secretary
Joseph Hertzman, Vice Chair
David Kaplan, Vice Chair
Jay Klempner, Vice Chair
Laurence Nibur, Treasurer

Elected Directors

Lee Benovitz
Shannon Benovitz
Bruce Blue
Myrle Davis
Harry Geller
Lance Gilbert
Stuart Goldberg
Angeline Golden
Nathan Goldman
Doug Gordon
Helene Kramer Longton
Kate Latts
Alex Rosenberg
Susan Rudy
Amy Ryan
Michael Shaikun
Scott Trager
Jeff Tuvlin
Leon Wahba
William Yarmuth

Louisville Board of Rabbis and Cantors Representative

Cantor Sharon Hordes

JCL Board Intern

Barrett Tasman

Past Presidents

Ronald Abrams
Ed Cohen
Joe Fineman
Ed Goldberg
Toni Goldman
Jane Goldstein
Frankye Gordon
Sandy Hammond
Dennis Hummel
Fred Joseph

Marshall Kahn
Arlene Kaufman
Howard Klein
David Kling
Bob Kohn
David Leibson
Steve Linker
Marcia Roth
Marty Ruby
Bob Sachs
Marcia Schuster
Steve Shapiro
Jill Simon
Jerry Temes
Ed Weinberg

JCL Executive Committee

David Klein, Chair
Karen Abrams, Secretary
Joe Hertzman, Vice Chair
David Kaplan, Vice Chair
Jay Klempner, Vice Chair
Laurence Nibur, Treasurer
Shannon Benovitz
Susan Rudy
Michael Shaikun

Governance Committee

Karen Abrams, Chair
Bruce Blue
Lance Gilbert
Craig Goldstein
Dennis Hummel
Lee Hyman
Helene Kramer Longton
Susan Rudy
Mark Weiss

Planning & Allocations Committee

Jay Klempner, Chair
Harry Geller
Lance Gilbert
Jane Goldstein
Dennis Hummel
Glenn Levine
Hunt Schuster
Leon Wahba
Jacob Wishnia

Program Steering Committee

Jeff Tuvlin, Chair
Karen Abrams
Amy Gilbert
Angeline Golden
Jane Goldstein
Joy Kaplan
Laura Klein
Karen Kohn
Glenn Levine
Jennifer Leibson
Marsha Roth
Sara Wagner

2011 Annual Campaign Chair

Ralph Green

Women's Philanthropy Chair

Kate Latts

Lion of Judah Chairs

Debbie Friedman, Co-Chair
Denise Schiller, Co-Chair

Pomegranate Chairs

Robin Miller, Co-Chair
Jennifer Tuvlin, Co-Chair

Ben Gurion Society Chairs

David and Elizabeth Kaplan

Young Adult Division (YAD) Board

David Kaplan, Co-Chair
Jennifer Leibson, Co-Chair
Robert Bornstein
Julie Ellis
Craig Friedman
Seth Gladstein
Matt Golden
Howard Kaplin
Jenna Koff
Aaron Leibson
Elizabeth Post
Becky Ruby Swansburg
Benjamin Vaughan

Super Sunday Committee

Helene Kramer Longton, Chair
Bailey Haskell
Deborah & Brian Goldberg
Andrea Melendez
Howard Kaplin
Laurence Nibur

Women's Event Committee

Janet Hodes, Co-Chair
Shane Shaps, Co-Chair
Eleanor Schwartz, Co-Chair
Kim Schwartz, Co-Chair
Karen Abrams
Shellie Benovitz
Karen Blue
Shellie Branson
Rhoda Faller
Laura Klein
Beth Salamon
Erin Scianimanico
Michelle Tasman

Men's Event Chairs

Hunt Schuster, Co-Chair
Jeff Tuvlin, Co-Chair

YAD Main Event Hosts

Heather and Seth Gladstein,
Co-Chairs
Shifrah and Bob Bornstein
Elizabeth and David Kaplan
Jenna Koff
Elizabeth Post
Allison and Ari Schwartz
Kim and Scott Schwartz
Jennifer and Jeff Tuvlin
Melanie and Sean Wachsman
Diane and Reed Weinberg

Young Leadership Development (YLD)

Shannon Levine, Co-Chair
Scott Weinberg, Co-Chair
Anna Aleksander
Michelle Elisburg
Kat Johnson
Jenna Koff
Bryan Matthews
Laurence Nibur
Elizabeth Post
Lisa Rothstein
Barrett Tasman
Melanie Wachsman

The PJ Library Chair

Marsha Roth, Chair

Camp Committee

Jasmine Farrier, Chair,
Catie Bayne
Bari Calderon
Terri Cleary
Jacquelyn Craig
Sara Dentinger
Kim Franklin,
Brett Friedman
Sean Goodpaster
Amy Greenamyre
Eileen Renco
Amy Ryan
Hunter Weinberg

Children Committee

Karen Kohn, Chair
Anna Feitelson
Beth Haines
Julie Marks
Amy Ryan
Lisa Resnik
Kim Schwartz
Erin Scianimanico
Kelly Waterman

Teen Committee

Glenn Levine, Chair
Linda Spielberg, High School
Committee Chair
Matt Schwartz, Sports Committee
Chair
Rebecca Waller, Teen Representative
Myrle Davis
Lisa Rothstein Goldberg
Shana Honigberg
Joanie Lustig
Laurence Nibur
Barbara Schwartz
Cindy Schwartz
Julie Strull
Jennifer Tuvlin
Stacy Waller
Robin Weiss

High School Committee

Linda Spielberg, Chair
Sadie Cohen
Eli Gould
Joanie Lustig
Marcie Levine
Natania Lipp
Laurence Nibur
Lisa Rothstein Goldberg

Hillel Committee

Gariy Ocheretner, Hillel President
Bailey Haskell, Hillel Vice President
Max Behr
Natalie Polzer
Edwin Segal
Steven Snow
Lee Shai Weissbach

Melton Committee

Laura Klein, Chair
Karen Bloom
Steve Bloom
Sandra Harrison
Jon Klein
Robert Sachs
Douglas Sharps
Judah Skolnick

Senior Adult Committee

Margot Kling, Chair
Estelle Garmon, Past Chair
Mag Davis
Jerry Fleischer
Lou Frankel
Roselee Katz
Joyce Myers
Rosemary O'Leary
Ruthie Passamaneck
Emily Podgursky
Miriam Sherman
Simon Wolf

Jewish Community Relations Council (JCRC)

Ayala Golding, Chair
Marie Abrams
Anna Aleksander
Mark Ament
Margot Barr
Betsy Bennett
Amy Garon Benovitz
Carl Bensinger
Myrle Davis
Jerry Fleischer
Matt Golden
Albert Goldin
Marlene Gordon
Fred Gross
Phil Grossman
David Kaplan
Kathy Karr
Jon Klein
Margot Kling
Helene Kramer Longton
David Leibson
Aaron Leibson
Jennifer Leibson
Alan Linker
Jessica Loving
Bryan Mathews

Rabbi Stan Miles
Barbara Myerson Katz
Laurence Nibur
George Polur
Rabbi Joe Rooks Rapport
Debby Rose
Bob Sachs
Beth Salamon
Hank Savitch
Dafna Schurr
Cindy Schwartz
Frank Schwartz
Ed Segal
Steve Shapiro
Amy Shir
Rabbi Robert Slosberg
Jeff Slyn
William Stone
Ben Vaughan
Leon Wahba
Robert Waterman
Scott Weinberg
Matthew Weinberg

Jewish Community Relations Council Executive Committee

Ayala Golding, Chair
Marie Abrams
Amy Garon Benovitz
Carl Bensinger
Phil Grossman
Helene Kramer Longton
Bryan Mathews
Rabbi Stan Miles
Hank Savitch
Ed Segal
Steve Shapiro
William Stone
Leon Wahba

Yom HaShoah Committee

Cindy Schwartz, Co-Chair
Fred Whittaker, Co-Chair
Fred Gross
Linda Kanter
Cantor David Lipp
Rabbi Stan Miles
Dan Penner
Jeff Slyn
Dan Streit

Partnership 2Gether Committee

Laura and Jon Klein, Co-Chairs
Kathy Karr, Cultural Arts Task Force
Phil Rosenbloom, Medical Task Force
Judy Sharp, Education Task Force

CenterStage Board

Candy Pierce, Chair
Sara Abner
Jon Adams
Angie Aronoff
Dona Boone
Jan Bowling
Kristy Calman
Ellie Catlett
Linda Davis
Jennifer Diamond
Carol Dines
Kelly Dood
Dr. Eugene Dorf
Nick Duett
Karen Duff
Virginia Evans
Emily Fields
Sandi Friedson
Kim Goldman
Sarah Harlan
Jill Higginbotham
Laura Hoke
Jacob Isaac
Barbara Myerson Katz
Mandy Kramer
Casey Leek
Andrea Melendez
Jeremy Moon
Jauren Morelli Hammond
Sam Pilotte
Jordan Price
Christy Shircliff
Jamie Shuler
Larry Singer
Sandy Stoler
Bernard Sweet
Jason Tumulty

Naamani Library Committee

Evie Topcik, Chair
Judy Olson
Ed Segal
Marcia Segal

Festival of the Book Committee

Evie Topcik, Chair
Michele Ellisburg
Linda Goldberg
Georgia Goldman
Debbie Rose
Marcy Rosengarten

Jewish Film Festival Committee

Keiley Caster, Chair
Rabbi David Ariel-Joel
Sandra Braunstein
Michael Furey
Jan Glaubinger
Angeline Golden
Meryl Kasdan
Louis Levy
Cantor David Lipp
Rabbi Stanley Miles
Pami
Shelly Rifkin
Susan Waterman
Stephanie Wolf

Visual Arts Committee

Bette Levy, Gallery Director
Debbie Levine,
Installation Assistant
Jan Collins-Langford
Linda Fuchs
Frima Gelbard
Kay Grubola
Jim Grubola
Debbie Levine
Bernice Mazin
Marianna Metcalf
Felice Sachs
Ralph Schowe

Finance Committee

Laurence Nibur, Chair
Ron Abrams
Ross Cohen
Stuart Goldberg
Allan Latts
Susan Rudy
Leon Wahba
Leonard Wexler

Endowment Committee

Peter Resnik, Chair
Karen Abrams
Ronald Abrams
David Brill
Sheldon Gilman
Jane Goldstein
Robert A. Kohn
Glenn Levine
Alan Linker
Bruce Miller
Bruce Roth
Michael Shaikun
Steven Shapiro

Endowment Investment Committee

Glenn Levine, Chair
Ed Cohen
David Fuchs
Alan Glaubinger
Stuart Goldberg
Jay Klempner
Allan Latts
Laurence Nibur
Peter Resnik
Mark Switow
Scott Trager
Leon Wahba

Endowment Marketing Committee

Peter Resnik, Chair
Karen Abrams
Sheldon Gilman
Robert A. Kohn
Glenn Levine
Alan Linker
Michael Shaikun
Steven Shapiro

Marketing Committee

Shannon Benovitz, Co-Chair
Jessica Loving, Co-Chair
Judy Berzof
Marcie Levine
Helene Kramer Longton
Rabbi Laura Metzger
Elizabeth Post

Jewish Community of Louisville Staff

Senior Administration

Stu Silberman 238-2723
President & Chief Executive Officer
ssilberman@jewishlouisville.org

Sara Klein Wagner 238-2779
Senior Vice President &
Chief Operating Officer
swagner@jewishlouisville.org

Stew Bromberg 238-2755
Vice President &
Chief Development Officer
sbromberg@jewishlouisville.org

Jamie Pillsbury 618-5303
Vice President &
Chief Financial Officer
jpillsbury@jewishlouisville.org

Membership

Larry Mestel 238-2740
Senior Director of Membership &
Wellness
lmestel@jewishlouisville.org

Suzy Renfrow 238-2791
Membership Director
srenfrow@jewishlouisville.org

Tara Stone 238-2726
Customer Service Director
tstone@jewishlouisville.org

Programming & Development

Marsha Bornstein 238-2731
Festival Director
mbornstein@jewishlouisville.org

Matt Goldberg 618-5321
Jewish Community Relations Director
and Development Director
mgoldberg@jewishlouisville.org

Frankye Gordon 238-2735
Fundraising Director
fgordon@jewishlouisville.org

Programming & Development (con't)

Julie Hollander 238-2708
Senior Director of Youth Services
jhollander@jewishlouisville.org

John R. Leffert 238-2753
CenterStage Artistic Director
jleffert@jewishlouisville.org

Tzivia Levin 618-5308
YAD Director, Development Director
and Hillel Director
tlevin@jewishlouisville.org

Becky McKiernan 238-2748
Early Childhood Director
bmckiernan@jewishlouisville.org

Slava Nelson 238-2743
Senior Adult Program Director
snelson@jewishlouisville.org

Betsy Prussian 238-2784
Jewish Resource Center Director
bprussian@jewishlouisville.org

Diane Sadle 238-2749
Senior Adult Director
dsadle@jewishlouisville.org

David Siskin 238-2701
Middle School Director
dsiskin@jewishlouisville.org

Mary Jean Timmel 238-2739
Development Associate
mtimmel@jewishlouisville.org

Mary Dooley 238-2718
Program and Camp Assistant
mdooley@jewishlouisville.org

Health & Wellness

Ron Peacock 238-2792
Fitness Director
rpeacock@jewishlouisville.org

Liz Stumper 238-2742
Aquatics Director
lstumper@jewishlouisville.org

Communications and Community Newspaper

Shiela Steinman Wallace 238-2703
Editor of Community,
Communications Director
swallace@jewishlouisville.org

Ben Goldenberg 238-2711
Marketing Manager
bgoldenberg@jewishlouisville.org

Phyllis C. Shaikun 238-2757
Public Relations Manager
pshaikun@jewishlouisville.org

Celia Triplett 238-2778
Associate Communications Manager
ctringlett@jewishlouisville.org

Terry Helstrom 238-2750
Graphic Designer
ctringlett@jewishlouisville.org

Aaron Leibson 418-5845
Advertising Sales Representative
aleibson@jewishlouisville.org

Financial and Administrative Services

Kathy Luxemburger 618-5339
Senior Accountant
 kluxemburger@jewishlouisville.org

Shari Beaven 618-5304
Accountant
 sbeaven@jewishlouisville.org

Melissa Hartmann 618-5305
Accountant
 mhartmann@jewishlouisville.org

Lisa Moorman 618-5306
Human Resources/Payroll
 lmoorman@jewishlouisville.org

Cindy Lewis 238-2722
IT Manager
 clewis@jewishlouisville.org

Administrative Staff

Paula DeWeese 238-2764
Executive Secretary
 pdeweese@jewishlouisville.org

Eloise Stemmle 238-2722
Executive Secretary
 estemmle@jewishlouisville.org

Operations and Maintenance

Maintenance & Housekeeping Hotline 238-2717

Brian Tabler 238-2772
Facility Manager
 btabler@jewishlouisville.org

Lindley Able 238-2754
Security Director
 lable@jewishlouisville.org

Larry Bischof
Maintenance
 maintenance@jewishlouisville.org

Sherman Marshall
Maintenance
 maintenance@jewishlouisville.org

John Dillon, III
Grounds
 maintenance@jewishlouisville.org



Some of the JCL Program Staff



Jewish Community
 of Louisville

3600 Dutchmans Lane
 Louisville, KY 40205
 www.jewishlouisville.org • (502) 459-0660