



Jewish Community
of Louisville

Together in Life, Learning & Leadership

Annual Report
July 1, 2010-June 30, 2011

Message from JCL Board Chair David Klein and President/CEO Stu Silberman

As we conclude our first year as your selected leaders of the Jewish Community of Louisville, we are pleased to recount the work our agency has achieved based on the guiding principles contained within our mission statement:

Jewish Community of Louisville (JCL) serves as the collective body to preserve and enrich Jewish life and values in Louisville, Kentucky, and to identify a connection to the State of Israel, by providing the services and resources that meet educational, recreational, social and cultural needs of the individual and affected organizations.

The word community is derived from the Latin *communitas*, the translation meaning “together” and “gift.” Broadly the term came to mean fellowship or organized society. It is within this context that your professional and volunteer leadership have worked with the synagogues, educational providers and service agencies to lay the foundation for a stronger community now and with an eye towards the future.

We are experiencing great change – in our agency, in our local community and on the national scene. Our mission, though, is unwavering. To be true to this mission we have taken many positive steps.

We are embarking on a major strategic planning effort, led by our Board of Directors and facilitated by the Jewish Federations of North America’s Consulting Practice. This effort will build upon the excellent work completed to date both pre- and post-merger.

Thanks to the leadership of our new Governance Committee led by Chair Karen Abrams, we recently adopted new bylaws that invite broad community participation onto a JCL Board of Directors with a single, voting class. Our directors have reaffirmed their commitment to the agency and will abide by an increased set of expectations, including active involvement on our committees. We cannot thank them enough for their leadership and determination to the success of the JCL. To formally recognize and utilize the experience and wisdom of past leadership, we have established a Council of Past Presidents and Chairs and invited their participation on our board.

Volunteer committees are the lifeblood of our agency. Examples include our Campaign Cabinet led by Chair Ralph Green, that despite continuing difficult economic times, led a Campaign that raised \$2.3 million. The Campaign allowed the Planning and Allocations Com-



David Klein



Stu Silberman

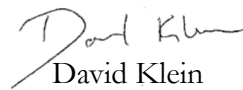
mittee, led by Chair Joe Hertzman and Vice Chair Jay Klempner, to strengthen the delivery capabilities of our local agencies, national organizations and international partners. Our Programming Committees, aligned with our concierge model of services, and led by volunteers with interests ranging from preschool to seniors, and from Cultural Arts to Jewish Life, provided insights and support to the JCL staff across each of our programs and services. Please see the complete list of committees in this report and if you are not presently involved and would like to help us further our journey, please get in touch with the appropriate JCL staff member, also listed in the report.

We are improving the appearance of our building and campus, to continue to position ourselves competitively in the Louisville marketplace. Thanks to the donations from many of you, we added a coffee shop to our lobby and refreshed our look with the assistance of more than 400 volunteers from General Electric. They helped us create new program space, spruced up many of our outside areas, built new fences, installed flat-panel TVs in our fitness areas, added a Gaga pit and provided us a fresh coat of paint throughout the JCC.

This great project was completed at the end of the fiscal year, just in time to welcome the press and the public to meet Jewish, four-time Olympic Gold Medal winner Lenny Krayzelburg at our JCC. The renowned swimmer came to Louisville to help us begin our new fiscal year with the launch of the Lenny Krayzelburg Swim Academy. This academy teaches water safety, and is just the latest addition to a long line of vibrant programs that attract and engage community members – both Jewish and non-Jewish – to all we have to offer. These programs, which range from fitness classes and summer camp to early childhood education and top-flight theater, often sell out.

Our work is never ending. This year we will build upon our successes and focus on reinvigorating additional functions of our agency. We thank you for your generous support with the contribution or your time and/or financial donations. We look forward to your ongoing support and guidance as we continue on the

path to ensure a sustainable, vibrant and inviting Jewish Community of Louisville for generations to come.



David Klein
Board Chair

Jewish Community of Louisville



Stu Silberman
President and CEO

Jewish Community of Louisville Award Winners*

**Full biographies of the award winners can be found online at www.jewishlouisville.org.*

Blanche B. Ottenheimer Award: Rev. Timothy and Nina Moseley



Rev. Timothy and Nina Moseley

The Blanche B. Ottenheimer Award recognizes individuals who have devoted their lives to tikkun olam – the repair of the world – and have made a real difference in Louisville.

Rev. Timothy and Nina Moseley, president/CEO and Chief Operating Officer respectively, are the visionaries that have transformed Wayside Christian Mission from an overnight shelter for the homeless into a network of partnerships that not only provides food and shelter, but offers opportunities to help people turn their lives around.

Together, they have built a safe place for people to live while they learn the life skills they need to be independent, productive citizens. In the process, they've

also ensured that Wayside has a steady stream of income to support their basic services. The Moseleys are not content to sit on past accomplishments. They are always looking for new partnerships and opportunities to help their clients and make Louisville a better community.

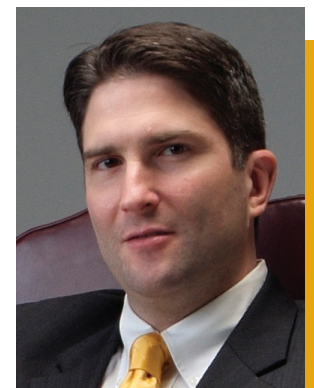
Lewis W. Cole Young Leadership Award: David Kaplan

The Lewis W. Cole Young Leadership Award recognizes young adults who have taken on leadership responsibilities today and will be the community leaders of tomorrow. The winner will attend the Jewish Federations of North America General Assembly.

David Kaplan co-chaired the Jewish Community of Louisville's Young Adult Division of the Annual Campaign and is a member of the JCL's Executive Committee and Board of Directors. He has served as chair of the JCL's Jewish Community Relations Council (JCRC) and continues to serve on its Executive Committee. He also co-chaired Yachad Kadima, the committee that effected the merger of the Jewish Community Federation and the Jewish Community Center.

Kaplan and his wife, Elizabeth, co-chaired Super Sunday and he co-chaired the Young Adult Division of the 2004 United Jewish Campaign. He co-chaired the JCRC's Emergency Israel Community Relations Committee, and also served on the Federation's Board of Directors before the merger. In 2002, he received the Jewish Community Federation's Julie E. Linker Community Relations Young Leadership Award.

Kaplan has served on the Board of Four Courts Senior Center, and he presently serves on the Board of Jewish Hospital & St. Mary's Healthcare.



David Kaplan

Joseph J. Kaplan Young Leadership Award: Amy Ryan



Amy Ryan

The Joseph J. Kaplan Young Leadership Award recognizes young adults who have taken on leadership responsibilities today and will be the community leaders of tomorrow. The winner will attend the Jewish Federations of North America General Assembly.

Amy Ryan came to Louisville just seven years ago and has become very active in the Jewish community. She was born in Cincinnati and grew up in Cleveland, OH, where she was very involved at the Jewish Community Center as a child and then worked there as a counselor and with early childhood, summer camp, after school and teen programs.

Professionally, she helps groups with collaboration, facilitation and strategic planning. As the JCC and the Federation worked toward merger, she felt she had unique skills and could assist in the process, so she offered to help.

Ryan played an instrumental role in the merger and was elected to the first Jewish Community of Louisville Board, where she continues to serve. She also will serve on the design team for the JCL's strategic planning process.

In addition, she has served on several committees, including the Search Committee for the CEO, the Programming Subcommittee that looked at the offerings for children in grades 3-5, and the Human Resources Committee. She also has led leadership development sessions for the JCL's Young Leadership Development program and The Temple as well as solicitor training sessions for the JCL Annual Campaign.

Julie E. Linker Community Relations Young Leadership Award: Laurence Nibur

The Julie E. Linker Community Relations Young Leadership Award recognizes young adults who show outstanding promise and have taken an active interest in and demonstrate devotion to the field of Jewish Community Relations. The winner will attend the Jewish Council for Public Affairs Plenum.

Laurence Nibur moved to Louisville with his family when he was 11. He attended Eliahu Academy, was a member of Mu Sigma Resnick AZA in the BBYO program and is a past member of the Jewish Community Center's Board of Directors. During his time on IU's Bloomington campus, Nibur was very active in Hillel and served terms as the organization's president and treasurer.

Today, he is the treasurer of the Jewish Community of Louisville, serving on the Board and the Executive Committee. He is a member of the JCL's Jewish Community Relations Council and co-chaired Super Sunday for the 2008 Campaign. He also serves on the Board of The Temple and is a youth group adviser for TiLTY, the congregation's high school youth group.

Nibur's passion for promoting relations with Israel and community bridge building inspire him to continue his work with the JCRC.



Laurence Nibur

Arthur S. Kling Award: Edwin Goldberg



Edwin Goldberg

The Arthur S. Kling Award recognizes staff and/or volunteers who have been outstanding performers for the JCC and includes an award that enables the recipient to pursue educational opportunities.

Edwin Goldberg, whose family has lived in Louisville for several generations, grew up at the Jewish Community Center back when it was located on Second Street and called the YMHA. He has been a lifelong JCC member and volunteer.

From tenderfoot to Eagle Scout to scout master, he was a member and leader of the JCC's scout troop for more than 30 years. He was also an advisor for BBYO's Pi Tau Pi chapter and served on the JCC's HPER Committee.

He is a past president of the JCC Board, was heavily involved in the major renovations done in 1985 and 1997, chaired the House Committee and still remains involved as a consultant. Goldberg chaired the committee that brought Java Brewing (now Vint) to the JCC, and worked closely with Max Behr and Jake Wishnia to raise the money to underwrite the project.

Nationally, Goldberg is on the JCCA (Jewish Community Center Association) Board, where he has served as a Board member for four years and as treasurer for two. In 2010, he was re-nominated for a four-year term to conclude in 2014. Goldberg chaired an internal study on JCC governance, sits on the Financial Resource Development Committee and is involved in planning the 2012 Biennial in New Orleans.

A graduate of the University of Louisville's Speed Scientific School, Goldberg joined his father in running a business that is now a wholesale distributor of paper, janitorial and concession products.

Ellen Faye Garmon Award: Klaire Spielberg

The Ellen Faye Garmon Award was established by the Gamma Kappa Social Club in order to further the work of high schoolers who, in the spirit of Ellen, are involved in Jewish life through BBYO and with the Jewish Community Center, and in the general community. It is supported through the sale of all-occasion cards.

Klaire Spielberg is a straight-A student at Collegiate of Louisville where she is a junior with a focus on international studies. She has just finished her first year as president (n'siah) of Jay Levine BBG in BBYO.

Born in Louisville, she attended Eliahu Academy and she enjoys volunteering. She participated in the Community Hunger Walk and, with her BBG friends, helped plant the vegetable garden at the JCC.

The award will provide the opportunity for Spielberg to attend the BBYO's International Kallah (convention) in Pennsylvania for 20 days next summer. Kallah offers a deep Judaic experience in which participants are given the opportunity to explore their own Jewish identity and engage with others in programs on spirituality, culture and religion.

At Collegiate, she is a member of the rowing team and will be inducted into the National Honor Society next year.



Klaire Spielberg

Stacy Marks Nisenbaum Award: Chelsea Rosenberg

The Stacy Marks Nisenbaum Award was created in her memory by three close friends, Stacy Gordon-Funk, Wendy Snow and Sally Weinberg, who felt that the BBYO scholarship program was the best way to honor her.

Chelsea Rosenberg, a 10th-grader, is an honor roll student and member of Junior Beta Club at Ballard High School. Rosenberg attended Eliahu Academy for five years and is a student at the High School of Jewish Studies.

She is very active in BBYO. She attended the March BBYO Kallah and was the Jay Levine BBG Chapter Morah, the teacher for the chapter's new members-in-training (MITs). In April, she attended the MIT/Aleph-in-Training (AIT) experience at Camp Livingston, and she plans to become even more involved in BBYO, locally and regionally.

Outside of school, she plays softball at Lyndon Recreation and is active with Walden Theatre. She also has volunteered at Gilda's Club and is a counselor at the Jewish Community Center camp this summer.

The Nisenbaum Award will enable Rosenberg to attend the CLTC (Chapter Leadership Training Conference) next summer.



Chelsea Rosenberg

Stuart Pressma Student Leadership Award: Sarah Ensign, Molly Fine, Hayley Grossman, Talia Wagner



Sarah Ensign

The Stuart Pressma Student Leadership Awards include a cash prize and the winners' names engraved on a plaque at the Jewish Community Center. The awards honor the memory of Stuart Pressma, a young leader and dedicated community volunteer.

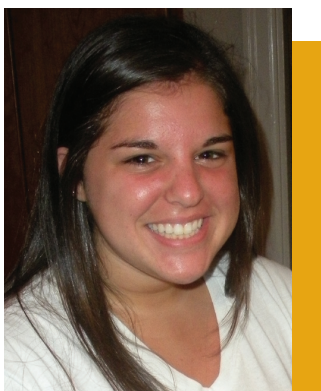
Sarah Ensign, a graduate of Ballard High School, helped the Jay Levine BBG chapter of BBYO grow from a small group to close to 40 over the past four years. She served two terms as chapter secretary and two as president, and helped train new MITs (Members in Training) at BBYO's Camp Swoneky in Ohio.

She also attended several Kallah training sessions, served one term as regional president and, in 2010, she was named N'siah of the Year.

Ensign participated in the AIPAC (American Israel Public Affairs Committee) High School Summit in 2009, was a teen representative to the Jewish Federations of North America's Jewish Futures Conference, was the head BBYO delegate to the Washington, DC, Executive Conference, attended the ILSI (International Leadership Seminar in Israel) last summer and took part two in BBYO international conventions.

At Ballard, she was a member of the National Honor Society and Beta Club and played field hockey. She plans to pursue a double major in journalism and fine arts and to be active with AIPAC at Indiana University. This summer she is working at the Jewish Community Center camp and traveling.

Ensign is a past recipient of the Stacy Marks Nisenbaum and Joseph Fink Awards and a member of The Temple.



Molly Fine

Molly Fine has been involved with Jay Levine BBG and BBYO throughout high school both locally and regionally. Since her sophomore year, she has served on her chapter's board as vice president of programming and vice president of Judaism/community service/social action.

At Ballard, she was hours secretary of the Beta Club and a member of the National Honor Society. She also played both field hockey and lacrosse.

This summer, she worked as a counselor at Beber Camp, and will attend Indiana University in the fall.

Fine is a Louisville native, as were her parents, the late Miriam and Dennis Fine.

When her mother passed away in 2004, Fine, her dad and her brother and sister chose to honor her by creating the Miriam Fine Memorial Beber Camp Scholarship Fund to help provide others with the opportunity to enjoy the type of Jewish camping experience that had been so much a part of her life and theirs.

Hayley Grossman served two terms as *n'siah* (president) and two as *morah* (vice president of recruitment, retention and education) of the Jay Levine BBG chapter of BBYO, and served on every committee for regional conventions. She coordinated the KIO (Kentucky, Indiana and Ohio) regionals in 2010 and was regional Teen Connection chair in Louisville.

In 2009, Grossman was elected chapter sweetheart and was named regional sweetheart in 2010. She attended an International Convention, was selected Regional Chapter Morah of the Year and was recognized for the Biggest Recruitment Event of the Year. In 2011, Jay Levine BBG was named Chapter of the Year.

At Ballard High School, she was vice president of Beta Club, and a member of the National Honor Society, the Bruin's National Spirit Committee and Schools for Schools (which helps starving children in Africa). She also played varsity tennis her freshman and sophomore years, was a student ambassador, worked on the newspaper and in broadcasting, was a Governor's Scholar and was last year's Teen Topics editor for *Community*.

Grossman has been a Hebrew School tutor at The Temple and a participant in Keshet Kentucky. She received the Stacy Marks Nisenbaum Award last year.

She will attend Indiana University this fall.



Hayley Grossman

Talia Wagner served as Jay Levine BBG's *gizborit* (treasurer), *mazkirah* (secretary), *s'ganit* (vice president) and chair of community service. She attended five regional conventions and many local events and was the first BBYO representative on the JCL's Teen Programming Committee, which led to her planning the committee's first-ever Teen Service Day last October.

She also was involved with CenterStage at the JCC and worked regularly at the JCC in the Children's Department. She was a participant in the JCL's Keshet Kentucky program, and for the past four years, she was a trainer for middle school and teen callers for Super Sunday. She received the Stacy Marks Nisenbaum Award last year.

Wagner is an honor student and graduate of DuPont Manual High School and YPAS (the Youth Performing Arts School) in the dance program. She received the Sophomore English Department Award and the Martha Graham Spirit of Discovery Award for her senior dance research project. She has also danced with the Louisville Dance Alliance over the past two years.

Wagner is the dance specialist at Beber camp this summer – her 11th year at the camp and her first on staff. She also completed Beber's two-year leadership training program that included a three-week trip to Israel.

Wagner will attend the University of Florida, where she will be a pre-law student majoring in political science with a possible minor in dance.

She is a member of Adath Jeshurun and Keneseth Israel Congregations.



Talia Wagner

Joseph Fink Award: Nathan Spielberg

The Joseph Fink Award was created in memory of a man who devoted much of his time to making BBYO a rewarding experience for Louisville's Jewish teens. Traditionally, it goes to an outstanding graduating senior who has done a significant amount of community service.

Nathan Spielberg is a graduate of the Honors Program at Kentucky Country Day; he will attend MIT (Massachusetts Institute of Technology) in the fall.

As a 12-year-old, he designed and has now sold more than 20,000 plastic bracelets to support research on Dystonia, a neurological movement disorder that disproportionately affects Ashkenazi Jews, including his younger brother, Jacob. He helped raise thousands of dollars nationally and, last summer, he spent a month in Boston working with a Harvard University lab doing Dystonia research.

Spielberg served as chapter president and vice president of programming for BBYO's Drew Corson AZA chapter, and helped it grow from a small group to 18 members. He also served as regional shaliach (vice president) of community service and Judaism and helped his chapter win the regional basketball tournament. The recipient of last year's Ellen and Milton Cantor Israel Scholarship, he participated in BBYO's ILSI (BBYO's International Leadership Seminar in Israel).

He plays and builds custom electric guitars, and works with his father, Gregg, on restoring old cars. He is a member of The Temple.



Nathan Spielberg

Ronald and Marie Abrams Volunteer of the Year Award: Emily Podgursky



Emily Podgursky

The Ronald and Marie Abrams Volunteer of the Year Award, the Jewish Community of Louisville honors an individual who has devoted his/her life to volunteering.

Emily Podgursky delivers meals to Shalom Tower residents for the Jewish Community Center's Meals on Wheels program four days a week.

At Congregation Adath Jeshurun, she is a regular member of the minyan, opening the building and bringing bagels on Sunday and Monday mornings. She also is an occasional Torah reader. She's been a Melton student, too, and regularly attends Rabbi Robert Slosberg's and Cantor David Lipp's downtown Talmud study group.

Podgursky often provides transportation for a friend and through Jewish Family & Career Services' PALS program, donates blood and works at the polls on election day. She participates in the Senior Center programs, serves on the Senior Center Committee, attends monthly discussions, uses the library and likes to swim.

Elsie P. Judah Award: Rosemary O'Leary

The Elsie P. Judah Award honors an individual who is an outstanding volunteer in the JCL's Senior Adult Department.

Rosemary O'Leary is an active Adult Social Club member and participates in many senior activities including Club 60, swimnastics and chair exercise. She also is a member of the Senior Adult Committee.

Several years ago, she volunteered to organize the monthly Gourmet Dining Club, bringing it back to life. She constantly calls seniors and invites them to participate and, thanks to her dedication, more than 20 seniors a month take part in the program. Whenever O'Leary is out in the community, she tells everyone how wonderful the Jewish Community Center is. Her warmth and inviting personality have made her a favorite among her peers.



Rosemary O'Leary

Jewish Community of Louisville Highlights

2011 JCL Annual Campaign – Chair Ralph Green



Ralph Green

- The 2011 Campaign raised \$2.3 million by the time the Planning and Allocations Committee had to make its decisions. Campaign leaders continue to contact people who had not yet made their commitments.

- National Expert Jane Stein led a training

session for Campaign volunteers.



Julie Ellis, Maxine Rouben, Kate Latts and Jennifer Tuvlin

- Members of the Lion of Judah and Pomegranate Divisions heard reporter Erin Einhorn recount her quest to uncover the truth about how her mother survived the Holocaust. Lion of Judah Chair Kate Latts, Julie Ellis, Maxine Rouben and Jennifer Tuvlin chaired the event.



Erin Einhorn

- The JCL honored former Mayor Jerry Abramson at the Major Gifts event in January. The evening featured stories of love and hope from Tyler Levy, Eliza Zell, Dima Aksen, Lauren Kehr and Lize Goykhberg.



Jerry and Madeline Abramson



Barbara Franklin



Lize Goykhberg

- Barbara Franklin chaired Super Sunday on March 13, and the community answered the call to “spring into action” by pledging \$178,000 to the Campaign.



Mayim Bialik



Linda Schuster, Joy Kaplan

- The Annual Campaign’s Women’s Philanthropy Division brought actress, scientist and dedicated Jewish mother Mayim Bialik to Louisville for a thank you event held at the Water Tower on May 11. Joy Kaplan and Linda Schuster chaired the event.

Young Adult Division – Co-Chairs David Kaplan and Jennifer Leibson



YAD Picnic



Jennifer Leibson



David Kaplan



*Hunter Weinberg,
Melanie Wachsman*

- The YAD Picnic on Sunday, August 22, at Hogan's Fountain, included a P.J. Library story, games for everyone and ice cream. Hunter Weinberg and Melanie Wachsman co-chaired the event.
- The Ben Gurion Society held a Pre-Rosh Hashanah "New Year's

Eve Party" at Asiatique on August 26, where they met new JCL President and CEO Stu Silberman. Julie Ellis chaired the Ben Gurion Society.

- At Sushi in the Sukkah, young adults learned how to make sushi. They sampled their creations while observing the mitzvah of eating in the Sukkah at Adath Jeshurun.



Julie Ellis



*Hannah Brazin, Glenn Saddle, Evan Rowe,
Matt Weinberg and Allison Schaffer at-
tended a Bats game with YAD.*

- YAD's new group

for young adults in their 20's and 30's held a series of social events throughout the year, often including a tzedakah project.

- Poet and performer Vanessa Hidary entertained at the annual YAD Campaign event on January 8 at Vincenzo's.
- After hearing the Megillah read to Beatles tunes, YAD celebrated Purim at Club AJ with hamantaschen, popcorn, wine, beer, coffee and comedian Nathan Wallace.
- Shannon Levine and Scott Weinberg chaired a new Young Leadership Development class, and 10 young adults made the commitment to learn the skills they will need to be effective leaders and board members.



Vanessa Hidary



Shannon Levine, Scott Weinberg

JCL Board of Directors and Committees – Board Chair: David Klein

- Stu Silberman began his tenure as JCL president and CEO in July.
- The Strategic Directions Committee, chaired by Kate Latts, prepared an analysis of the JCL, building on the earlier work of the Program Review Committee. The SDC divided its work among three



Stu Silberman

subcommittees: the Program Subcommittee, chaired by Jeff Tuvlin; the Finance Subcommittee, chaired by Peter Resnik; and the Facilities Subcommittee, chaired by Alex Rosenberg.



Kate Latts

- After 22 years of service to the community, Alan Engel, former executive director of the Jewish Community Federation, retired. Ronald and Marie Abrams co-chaired the celebration of his service on October 17.
- 2010 Young Leadership Award Winners Julie Ellis and Jeff Tuvlin, Kipnis-Wilson/Friedland Award Winner Cheryl Karp, JCL Board Chair David Klein, Karen Abrams, Alan Engel, Jim and Julie Ensign, Jennifer Tuvlin, and JCL staff members Stu Silberman, Sara Wagner and Tzivvia Levin attended the Jewish Federations of North America's General Assembly in New Orleans in November. Daniel Ensign and several Louisville Hillel students (see Hillel, page 13) participated in the Hillel track and Sarah Ensign participated in the BBYO track.



Alan Engel

- The JCL implemented a new concierge programming model with volunteer and professional point people for Early Childhood, Children, Teens, Young Adults, Adult Outreach and Seniors.
- The president of Jewish Community in Bucharest, Romania, Erwin Simsensohn, visited Louisville in November. He spoke to the JCL Board and attended a Campaign worker training.



JCL Board Chair David Klein and Project Chair Ed Goldberg cut the ribbon at Java Brewing's grand opening.

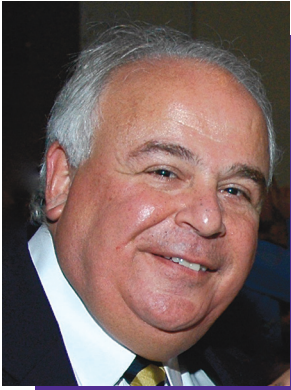
- When Java Brewing opened in the JCC lobby on January 17, Louisville gained a Kosher place to eat. The coffee shop shares the space with the Naamani Library. During the summer, the operators upgraded it and renamed it Vint. Generous donors made the renovation possible. Ed Goldberg was the project chair for the JCL. Evie Topcik led a group of volunteers who revamped the Naamani Library.
- The JCL and its Annual Campaign earned Charity Navigator's 4-star rating for the third year in a row. This designation is awarded only to charities that meet the rating organization's stringent guidelines.

- General Electric's Technology Department chose the Jewish Community Center for their major service project in June. More than 400 volunteers donated a total of more than 5,000 hours on 27 projects from roofing to carpeting to creating a new preschool room and much more.



GE volunteers at work

Jewish Community Relations Council – Chair: Leon Wahba



Leon Wahba

also encouraged the community to attend a special performance of *The Kite Runner* at Actor's Theatre on August 17 to help raise money for Pakistani flood victims.



Mayoral candidates Hal Heiner, Jackie Green and Greg Fischer



Carl Bensinger, JCRC Director Matt Goldberg, 3rd District Rep. John Yarmuth, moderator Sheila Berman and challenger Todd Lally

- The Jewish Community Relations Council is strengthening its relationship with the Association of Physicians of Pakistani Descent of Kentucky and Indiana (APPKI) in Louisville. On July 18, JCRC co-sponsored a concert featuring renowned Sufi singer Iqbal Bahu. JCRC
- JCRC teamed up with the National Council of Jewish Women, Louisville Section, to present a mayoral candidates forum on September 15 and a third district representative candidates forum on October 24, both held at the JCC.
- The JCRC organized and recruited volunteers from the Jewish community to participate in the annual Community Hunger Walk on September 19.

- In November, in response to the tremendous controversy in the community, JCRC invited Jefferson County Public Schools Superintendent Sheldon Berman to their monthly meeting, where he discussed JCPS' busing plans and answered questions.
- JCRC volunteers led several model Seders at area churches.
- On April 13, the JCRC brought Fred Lazin to speak about changing Israeli culture at the University of Louisville.
- Dr. Henry Fenichel shared his personal story of survival during the annual JCL community-wide Yom HaShoah commemoration on May 2. During the program, "A Time to Remember; a Time to Hope," he showed his small Torah that was taken into orbit on space shuttle Atlantis in memory of Israeli astronaut, Ilan Ramon, who had a similar scroll with him aboard the Columbia when that craft exploded, claiming the lives of all aboard and destroying the scroll.



Fred Lazin



Gila Glattstein lit one of 11 memorial candles during the Yom HaShoah commemoration.



Dr. Henry Fenichel showed the tiny Torah he allowed to be taken into space and its olive wood ark.

Jewish Life and Learning

- The Jewish Community of Louisville continued to offer the popular Melton Adult Mini-School core curriculum classes.



Steve Snow, Eileen Kaplan, Judah Skolnick, Nat Schwartz and Kathy Fields and Melton instructor Cantor David Lipp

- Each year, the JCL and Jewish Family & Career Services offer summer internships to Jewish college students who are from Louisville or who are studying in the city. This summer, Michael Klein did a marketing internship with the JCL.



David and Phyllis Leibson, Dr. Michael Cook and Nicole and David Goldstein

- Dr. Michael Cook delivered the Goldstein/Leibson Lecture on March 27. More than 100 people turned out to learn about “Gospel Dynamics.”

Hillel

- Hillel and AJ co-hosted Hillel in the Hut. After a falafel dinner, they watched Alan Dershowitz’s documentary *The Case for Israel: Democracy’s Outpost*.
- Louisville Hillel students Keith Callen, Lize Goykhberg, Adit Herscovic, Barry Mordukhaev and Eliza Zell participated in the Jewish Federations of North America’s Hillel track at its General Assembly in New Orleans in November. Hillel Director Tziviva Levin went with them.



Cantor David Lipp helped Courtney Hughes with the lulav and the etrog during Hillel in the Hut.



Hillel students at Jewlicious

- Seven Louisville Hillel students enjoyed the Jewlicious convention in February. The conference drew hundreds of young Jews to Long Beach, CA, for music and socializing, Jewish learning and fun. Keith Callen, Beau Diaz, Jacob Efman, Larry Forman, Adit Herscovic, Barry Mordukaev and Josh White were accompanied by JCL staffer David Siskin.
- Hillel students also attended a variety of local programs including a Shabbat dinner at the home of Karen Abrams and Jeff Glazer and an end-of-the-year pool party at the JCC.

Cultural and Performing Arts



CenterStage's Pegasus Parade float

- CenterStage is community theater at its best. The 2010-11 season included: *Seussical the Musical*, *Spelling Bee*, *Brigadoon*, *Man of La Mancha*, *The Music Man* and *A Funny Thing Happened on the Way to the Forum*. In November, Light Up CenterStage was a dazzling evening of fun that was also a very successful fundraiser for the company. In late April, CenterStage's Pegasus Parade float drew attention to next season, giving spectators a preview of *Hairspray*. Candy Pierce is chair of the CenterStage Committee, and John Leffert is the company's artistic director.



Joel Chasnoff

- During November, the Jewish Festival of the Book brought in Joel Chasnoff, author of *The 188th Crybaby Brigade*; Nancy Garfinkel and Andrea Israel, authors of *The Recipe Club*; Melvin Urofsky, author of *Louis D. Brandeis: A Life*; Kevin Salwen, author of *The Power of Half*; and Carey

Goldberg, author of *Three Wishes*. The festival also teamed up with The P.J. Library to bring in Laurel Snyder, who read her children's book, "Baxter the Pig Who Wanted to Be Kosher," at an event at The Temple.



Laurel Snyder

- In February, The Jewish Film Festival presented a wide variety of movies at several different venues. The offerings included: *Tough Crowd*, *Eli and Ben*, *Inside Hana's Suitcase*, *Nora's Will*, *Matchmaker*, *A Film Unfinished*, *Lost Islands*, *Le Rafle*, *Voice Teacher*, *Anita* and three short films from the Ma'ale School of Television, Film and Arts in Jerusalem. Keiley Caster chaired the Film Festival and Marsha Bornstein is the festival director.
- The JCL marked Yom HaAtzmaut, Israel's 63rd Independence Day, with an IsraelFest Celebration that included the Israeli band Ha-Tzimoret, games, activities, food and more.
- In October, the JCC Orchestra invited the community to "Dance the Night Away," in November. They presented "Carmen Fantasy" with soloist Sidney King, and in April, it was "Pictures at an Exhibition."



Tan Lines

- In June, the JCC became a movie set for the film *Tan Lines*. According to Laura Morton, associate producer and production coordinator, "The JCC was amazing. [It] had everything we were looking for." The areas of the JCC that were used in the film were the pool house, an office inside the JCC, the tennis courts and the field house.

Early Childhood



Elmo visited AJ

- The PJ Library, Shalom Baby and the Jewish Community of Louisville teamed up with Congregation Adath Jeshurun to bring Shalom Sesame to Louisville through AJ's Live from the 92nd Street Y program. Elmo show up for the Chanukah party.



Families enjoyed a Poolside Shabbat.



Everyone loves to sing with John Gage.

- The PJ Library teamed up with YAD (the Young Adult Division) for a Poolside Shabbat.
- John Gage regularly performs for the children. The youngest sit and listen on their mothers' knees. Older children love to sing along.
- The JCC's Early Childhood Education Center provides a nurturing, secure environment for young children. J-Care serves 20-22 infants and toddlers each month and currently has a waiting list. There are 55 students enrolled in J-Tots.

Children



Apple Pickin' at Huber's

- Apple Pickin' fun at Huber's has become a Rosh Hashanah tradition.
- Families enjoyed "Pizza in the Hut" in the JCC Sukkah on September 26; and at Chanukah, they learned to make latkes and *soofganiyot* (jelly doughnuts) with Najla.

- Justin Roberts and the Not Ready for Naptime Players had the children up and dancing during their Jungle Gym Concert at the JCC on January 9.



Justin Roberts in concert

- The JCC is a great place for children when school's not in session. During Spring Break Camp, children explored a different theme every day. For Prehistoric Times day, preschool children made dinosaurs out of Legos. while K-5 children explored Falls of the Ohio to look for fossils. School's Out days are also filled with fun.



Spring Break Camp

- A total of 577 children attended the JCC's Summer Camp in 2011 – over 100 more than last year. Five camps were filled to capacity, including Multi-Sport Camp and a CenterStage Theatre Camp.



Summer Camp fun

Teens

- The Teen Connection gave Middle Schoolers a chance to have fun together. They went skiing, saw a movie, ate dinner out and did community service projects.



Teen Connection dinner

- 24 teens from Louisville joined nearly 100 others from the KIO Region to attend the Kallah weekend March 4-6 at Camp Campbell Gard in Hamilton, OH.
- March 20, JCL took 14 area high school students to the U.S. Holocaust Memorial Museum in D.C. The trip was sponsored by JCL's Ida and Bernhard Behr Memorial Holocaust Education Second Century Fund. Students from schools across Kentuckiana applied to go on the trip.

- J-Serve drew 40 teens from BBYO (B'nai B'rith Youth Organization), NFTY (North American Federation of Temple Youth) and USY (United Synagogue Youth) for a day of service to the community. Working with Louisville Grows Garden Liaison Program, they prepared the vegetable garden behind the pavilion for planting and did some work on Jewish Family and Career Services' landscaping.



Teens from three groups worked together on J-Serve projects.

- More than 75 high school students were engaged in JCL teen programming this year.

Senior Adults

- The Senior Adult Nutrition Department, in partnership with KIPDA (Kentuckiana Regional Planning and Development Agency) and Louisville Metro Nutrition, continued to be the sole provider of kosher meals for KIPDA's seven county region. The program served and delivered over 12,000 meals. The JCC is also in partnership with Senior Care Experts to provide Home Delivered meals for their clients living in the Hikes Point area.
- The Senior Adult Department collaborates with Jewish Family & Career Services, the Brown Cancer Center, Visiting Nurse Service, Attorney General's Office, Humana and the Louisville Bar Association to ensure participants in the JCC's Senior Adult programs have access to the information and services they need.
- The Senior Adult Department served approximately 1300 senior adults through recreational, educational, health promotion, cultural and social activities. The Gourmet Dining Club, which meets once a month, has at least 20-25 seniors attending every month.

- An intergenerational model Seder, annual Sukkah luncheon, Purim and Chanukah programs, Friday Shabbat lunches and the Redt Yiddish



Senior Adult Chorus

Group provided traditional celebrations and activities.

- The High Time group took trips to Joe Huber's Farm, Equus Run Vineyards in Midway, KY., Horseshoe Casino, Derby Dinner Playhouse, Speed Art Museum, Klezmer Fest and the Cincinnati Museum Center-Cleopatra Collection.
- The JCL convened the Community Planning forum to look at long-range issues facing the Louisville Jewish community. The group decided to begin their work by looking at senior transportation. An online survey is being conducted through the end of August to identify specific transportation issues.

Partnership with Israel

- Liat Kazir, Danielle Elbaz, Yael Ben Yaakov (chaperone) and Yuval Monka were here in July 2010 with the Kefiada program. They helped with the JCC Summer Camp, sharing Israeli culture with the campers.
- The popular birthright israel program that offers free trips to Israel for young adults has many more applicants each year than it has places to accommodate them. Partnership with Israel's Midwest Consortium, of which the JCL is a member, put together a special birthright israel trip that guaranteed any young adult from a Consortium community a place on the trip. Louisvillian Melissa Rafson took advantage of this opportunity in July 2010. In May, 2011, Lisa Rothstein staffed the Consortium birthright israel trip and Eric Reskin and Ethan Freibaum participated.
- Drs. Nathan Berger, Karen Bloom, Michelle Elisberg and Richard Goldwin participated in the ERG program at Western Galilee Hospital in Nahariya where they learned about mass casualty response.



Drs. Nathan Berger, Michelle Elisberg, Karen Bloom and Richard Goldwin



Judy Sharp, left and Rabbi Stanley Miles, second from right, joined other volunteers in filling 120 boxes at a food bank in Akko.

- JCL Board Chair David Klein, JCL's Partnership with Israel Chair Kathy Karr and Temple Shalom's Rabbi Stanley Miles and President-Elect Judy Sharp participated in a mission to the Western Galilee, Louisville's Partnership region in Israel.

Health and Wellness

- GE Volunteers made improvements to the indoor pool area.
- The Aquatics Department signed a contract to bring the Lenny Krayzelberg Swim Academy to the JCC – the fourth JCC in the U.S. to have this exclusive program. They spent several months preparing and training. The program began in the 2011-12 fiscal year.
- Participation in Group Fitness classes is surging with total monthly attendance rising by 1,000 over last year.
- The Boot Camp program proved so successful that when the weather turned warm, the JCC began an outdoor Boot Camp; and a less strenuous Run for Fun program.



Health Fair

- In May, the JCC Hosted a Health Fair giving members the opportunity to participate in a number of health screenings and get information on nutrition, water and a variety of services and health issues.

Membership and Development

- The JCC values its members. On April 17, the JCC said thank you with Membership Appreciation Day. Members were invited to group fitness classes and to pilates and personal training demonstrations. Members enjoyed popcorn, cotton candy and coffee from Java Brewing (now Vint) and received a souvenir JCC water bottle as a gift.



Membership Appreciation Day



Heroes Day

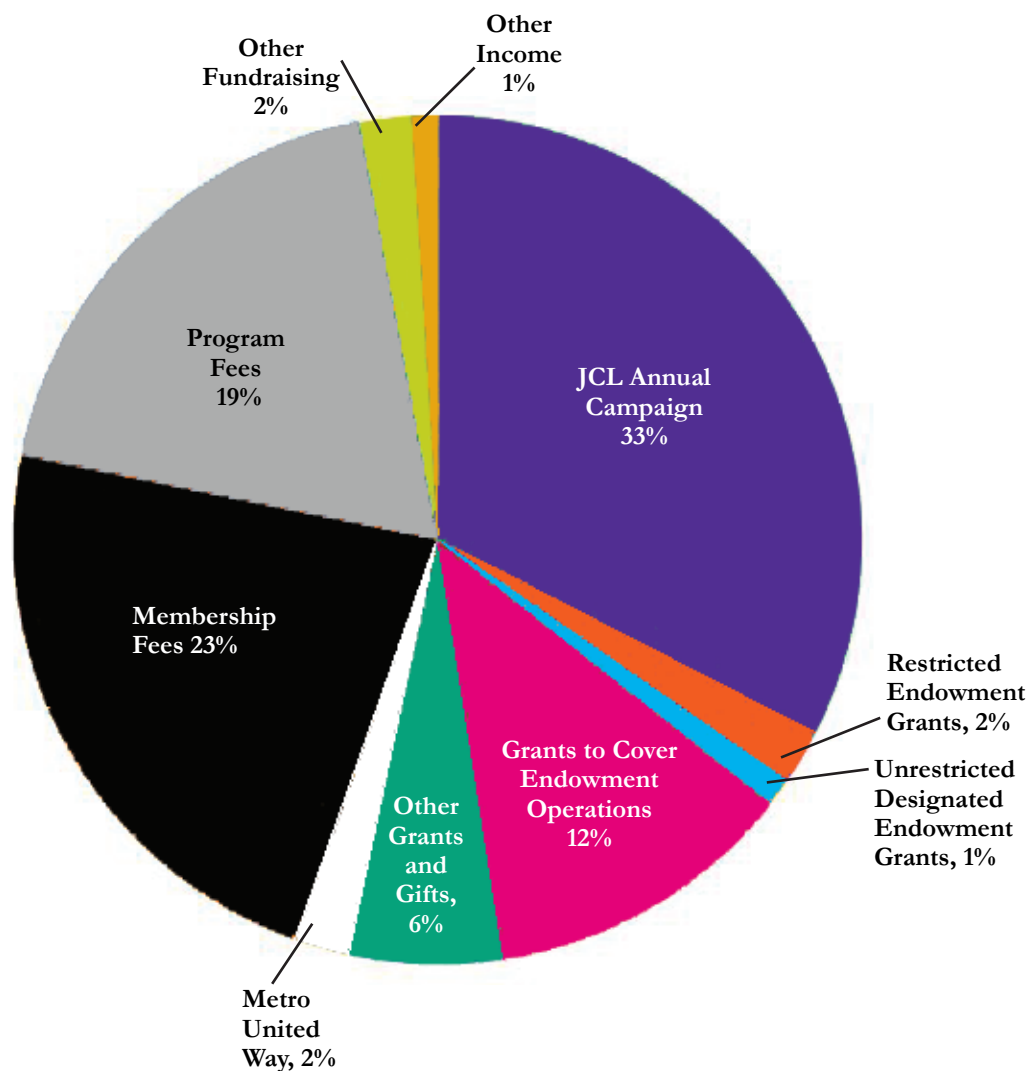
- Memorial Day was Heroes Day at the JCC. All active-duty military, police, fire and EMS members and their families were invited to use the JCC facilities and participate in fitness classes free of charge that day.
- The 2011 Republic Bank Golf Challenge, held June 27, got an overhaul this year. There was the traditional golf tournament, but this year, the event also included tennis and bridge competitions. Thanks to title sponsor Republic Bank and many other sponsors and donors and the hard work of an army of volunteers, the event was a tremendous success. Reed Weinberg was the event chair.

Jewish Community of Louisville Financials 2010-11 (Unaudited)

Revenues

Jewish Community of Louisville Annual Campaign (net of uncollectible accounts)	\$2,326,042
Grants from 2nd Century Funds and other Restricted Endowment.....	113,317
Grants from Unrestricted Endowment – Board Designated.....	28,669
Endowment Operations.....	833,837
Other Grants and Gifts	463,801
Metro United Way	153,713
Membership Fees.....	1,628,591
Program Fees	1,379,362
Other Fundraising.....	186,988
Other Income.....	39,507
Total Revenues.....	\$7,153,827

**JCL
Revenue Sources
2010-11**



Jewish Community of Louisville Financials 2010-11 (Unaudited)

Distributions

Overseas Allocations

Jewish Federations of North America	
Israel Allocations	\$360,607
Other Overseas Allocations	120,202
Total Overseas Allocations	\$480,809

Local Agencies

Community Health Subsidy.....	\$92,500
High School of Jewish Studies.....	17,982
Louisville Hebrew School.....	48,077
The Temple Hebrew School.....	56,319
Chavurat Shalom.....	14,985
Louisville Jewish Day School	29,970
Jewish Family and Career Services	247,296
Vaad Hakashruth.....	4,496
Pre-teen/Teen Program Initiative.....	29,970
Total Local Allocations	\$541,595

National/Community Relations/Religious Organizations

Jewish Communal Service.....	\$ 525
Agency Alliance.....	23,107
(Includes dues and allocations to: JCPA, JESNA, HIAS, JCCA, the National Conference on Soviet Jewry, National Fund for Jewish Culture and the Association of Jewish Family & Children's Agencies)	
National Council of Jewish Women	500
Hillel Consortium.....	20,000
Center for Learning and Leadership (CLAL).....	500
birthright israel.....	17,000
Total National/Community Relations/Religious Organizations	\$ 61,632

Total Distributions..... \$1,084,036

Expenses

Campaign Expenses	\$ 311,470
Program Services.....	3,763,854
Management and General	1,152,851
Occupancy	773,533
Other Fundraising.....	167,582
General Insurance, Interest and Trust Management Fees.....	342,904
Total Expenses.....	\$6,512,194

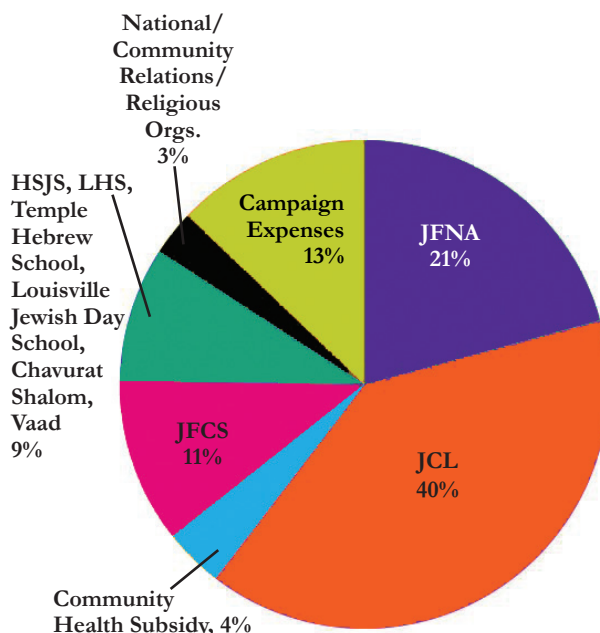
Total Distributions and Expenses \$7,596,230

Deficit (\$442,403)

Campaign Distribution

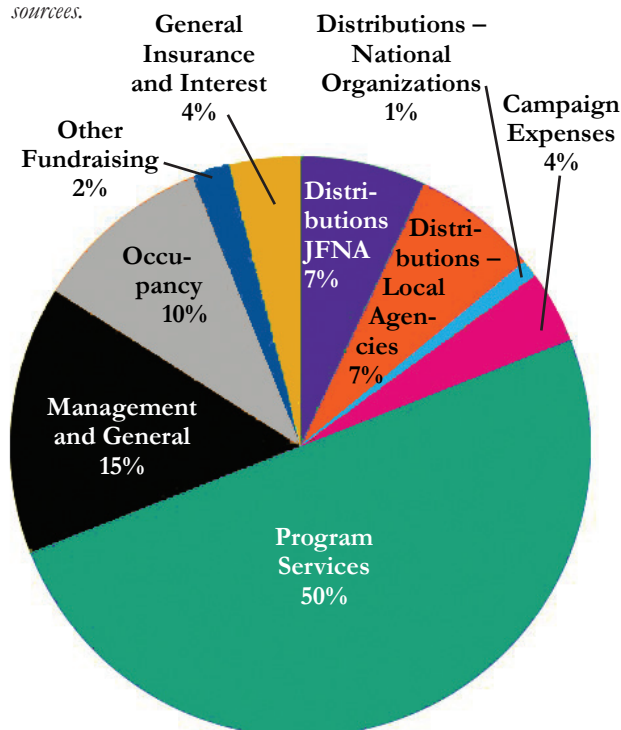
Percentages 2010-11

This chart represents only the distributions made from the dollars raised by the 2010 Annual Campaign.



Expense Percentages 2009-10

The percentages presented in the chart below represent expenses paid from the total JCL budget, which includes revenues from program fees, memberships, Campaign, grants and all other sources.



The Foundation for Planned Giving 2010-11 (Unaudited)

Assets

Philanthropic Funds.....	\$3,950,462
Restricted Funds	4,946,418
Unrestricted Funds.....	1,583,731
Unrestricted but Designated Funds.....	4,498,805
In Trust for Others	2,823,665
Total Foundation Funds as of 06/30/2011.....	\$17,803,082

Grants

Grants from Unrestricted/ Designated Used in Operations	\$28,669
--	-----------------

Grants from Philanthropic and Restricted Funds

Local Jewish Organizations	
Philanthropic Funds donated to Annual Campaign...	\$194,829
Other General Purposes	69,085
JFCS	7,322
JCC	113,317
Education	14,570
Synagogues.....	37,594
Total Local Jewish Organizations Grants.....	\$436,715
National Jewish Organizations	65,774
Local Secular Organizations	39,541
National Secular Organizations.....	32,475
Total Grants from Philanthropic/Restricted Funds ..	\$574,505

Total Grants	\$603,175
---------------------------	------------------

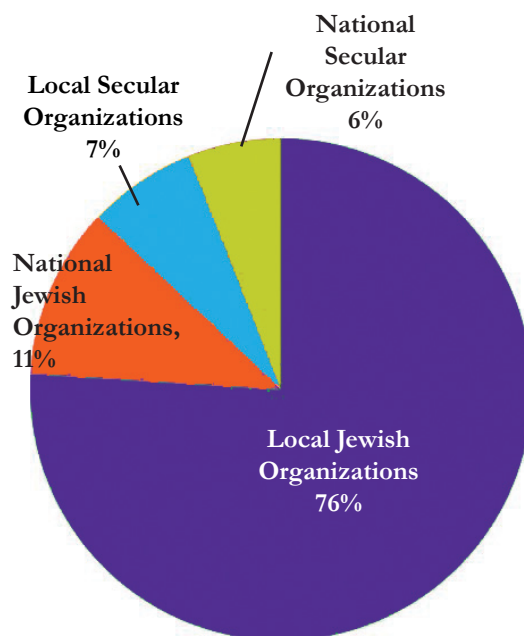
Philanthropic Funds are donor advised funds held by the Foundation for a set time period. During that time, a spending formula determines the dollar amount that the donor-designated individual(s) can donate to approved 501©3 organizations. At the end of the time period, the dollars remaining in the fund go to the Unrestricted Endowment.

Restricted Funds are funds held by the Foundation that were given by the donor with specific requirements as to their use. Most of the funds we hold are permanently restricted, meaning that the income from the fund can be used if the use meets the donor's stated restrictions, but the corpus can't be spent for any purpose.

Unrestricted and Unrestricted but Designated Funds are funds held by the Foundation that were given without any restrictions being placed on them by the donor of the funds. All or portions of those funds can be Designated by the Board of Directors for specific purposes. The Designations can be applied or removed at any time the Board chooses.

Funds held in Trust for Others are funds the Foundation holds on behalf of many of our Jewish Community partners. They pay a small fee for the service, smaller than they would pay to an outside service provider.

Grants from Philanthropic/ Restricted Funds 2010-11



Jewish Community of Louisville Committees

JCL Board of Directors

Officers

David Klein, Chair
Joe Hertzman, Vice Chair
Jeff Tuvlin, Vice Chair
Karen Abrams, Secretary
Laurence Nibur, Treasurer

Elected Board Members

Madeline Abramson
Lee Benovitz
Sheila Berman
Julie Ellis
Harry Geller
Stuart Goldberg
Angeline Golden
Ayala Golding
Doug Gordon
David Kaplan
Jay Klempner
Kate Latts
Shannon Levine
Helene Kramer Longton
Rabbi Stanley Miles
Alex Rosenberg
Susan Rudy
Amy Ryan
Michael Shaikun
Scott Trager
Leon Wahba
William Yarmuth

Synagogue Representatives

Bruce Blue, Adath Jeshurun
Myrle Davis, Anshei Sfard
Nathan Goldman, Keneseth Israel
Andrea Koven, Temple Shalom
Mark Oppenheimer, The Temple

Past Presidents

Ronald Abrams
Ed Cohen
Joe Fineman
Ed Goldberg
Toni Goldman
Jane Goldstein
Frankye Gordon
Sandy Hammond
Dennis Hummel
Fred Joseph

Marshall Kahn
Arlene Kaufman
Howard Klein
David Kling
Bob Kohn
David Leibson
Steve Linker
Marcia Roth
Marty Ruby
Bob Sachs
Marcia Schuster
Steve Shapiro
Jill Simon
Jerry Temes
Ed Weinberg

JCL Executive Committee

David Klein, Board Chair
Karen Abrams
Joe Hertzman
David Kaplan
Jay Klempner
Shannon Levine
Laurence Nibur
Susan Rudy
Michael Shaikun
Jeff Tuvlin

2011 Annual Campaign Chair

Ralph Green

Lion of Judah Chair

Kate Latts

Ben Gurion Society Chair

Julie Ellis

Young Adult Division (YAD) Board

David Kaplan, Co-Chair
Jennifer Leibson, Co-Chair
Robert Bornstein
Julie Ellis
Craig Friedman
Seth Gladstein
Matt Golden
Howard Kaplin
Jenna Koff
Aaron Leibson
Elizabeth Post
Becky Ruby Swansburg
Benjamin Vaughan

Lion of Judah/Pomegranate Event Chairs

Julie Ellis
Kate Latts
Maxine Rouben
Jennifer Tuvlin

Super Sunday Committee

Barbara Franklin, Chair
Fran Englander
Deborah Goldberg
Howard Kaplin
Judi Madger
Laurence Nibur
Elizabeth Post

Women's Big Bang Event Committee

Joy Kaplan, Co-Chair
Linda Schuster, Co-Chair
Julie Ensign
Debbie Hyman
Kat Johnson
Shannon Levine
Robin Miller
Marsha Roth
Beth Salamon
Mona Schramko
Kristin Shapira
Shane Shaps

YAD Main Event Hosts

Heather and Seth Gladstein,
Co-Chairs
Shifrah and Bob Bornstein
Elizabeth and David Kaplan
Jenna Koff
Elizabeth Post
Allison and Ari Schwartz
Kim and Scott Schwartz
Jennifer and Jeff Tuvlin
Melanie and Sean Wachsman
Diane and Reed Weinberg

Young Leadership Development (YLD)

Shannon Levine, Co-Chair
Scott Weinberg, Co-Chair
Anna Aleksander
Michelle Elisburg
Kat Johnson
Jenna Koff
Bryan Matthews
Laurence Nibur
Elizabeth Post
Lisa Rothstein
Barrett Tasman
Melanie Wachsman

Governance Committee

Karen Abrams, Chair
Bruce Blue
Lance Gilbert
Craig Goldstein
Dennis Hummel
Lee Hyman
David Klein
Helene Kramer Longton
Susan Rudy
Mark Weiss

Planning & Allocations Committee

Joseph Hertzman, Co-Chair
Jay Klempner, Co-Chair
Shellie Benovitz
Leigh Bird
Dr. Julie Ellis
Debbie Friedman
Angeline Golden
Ayala Golding
Richard Goldwin
Katherine Heise
Roy Hyman
David Klein
Glenn Levine
Rabbi Chaim Litvin
Craig Lustig
Carolyn Neustadt
Mark Oppenheimer
Susan Rudy
Denise Schiller
Hunt Schuster
Joan Simunic
Larry Singer
Steven Snow
Alan Ungar

Leon Wahba
Jacob Wishnia
William Yesowitch

Program Steering Committee

Karen Abrams - Chair
Rabbi David Ariel-Joel
Sheila Berman
Ellana Bessen
Ayala Golding
Jennifer Leibson
Rabbi Avrohom Litvin
Rabbi Stanley Miles
Rabbi Joe Rapport
Marsha Roth
William Ryan
Rabbi Robert Slosberg
Rabbi Joel Wasser

Early Childhood Committee

Hilary Pohn, Co-Chair
Shannon Rothschild, Co-Chair
Meredith Bloomberg
Shelly Breier
Reena Friedman Watts
Kristin Shapira
Melanie Wachsman
Hunter Weinberg
Lainie Yarmuth

The PJ Library Committee

Marsha Roth, Chair
Lori Abramson
Bari Calderon
Dr. Michelle Elisburg
Brett Friedman
Sarah Friedman
Jill Ginsberg
Heather Gladstein
Phyllis Green
Carol Heideman
Katherine Johnson
Marcy Rosengarten
Kristin Shapira
Mona Schramko
Marci Shuman
Lisa Simon
Kelly Waterman

Shalom Baby Committee

Amy Adams
Bari Calderon
Erica Farber
Brett Friedman
Heather Gladstein
Elisa Pardo
Kristin Shapira
Eva Sokol
Melanie Wachsman
Kristen Yoffe

Children's Committee

Karen Kohn, Chair
Anna Feitelson
Beth Haines
Michelle Hazani
Kat Johnson
Julie Marks
Betsy Prussian, NCJW Rep
Lisa Resnik
Nikki Russman
Amy Ryan
Kim Schwartz
Erin Scianimanico
Shane Shaps

Camp Committee

George Polur, Chair
Leslie Bates
Shifrah Bornstein
Bari Calderon
Terri Cleary
Jacquelyn Craig
Jasmine Farrier
Cathleen Franklin
Amy Greenamyre
Lisa Hirsch
Helene Kramer Longton
Greg Nordloh
Eileen Renco
Christon Segal

Teen Committee

Glenn Levine, Chair
Ally Baer
Eliza Coleman
Myrle Davis
Lisa Rothstein Goldberg
David Gould
Leslie Hanks
Josh Latzko

Joanie Lustig
Laurence Nibur
Brett Oppenheimer
Becky Ruby
Justin Sadle
Ellen Shapira
Linda Spielberg
Julie Strull
Stacy Waller
Robin Weiss

Kesher Kentucky Committee

Julie Ensign, Chair (until spring)
Linda Spielberg, Chair (current)

Kesher Kentucky Participants

Sam Cohen
Matthew Coleman
Sarah Ensign
Molly Fine
Mallory Glazer
Judith Goodman
Hayley Grossman
Ben Humphrey
Rachel Klein
Madison Kommor
Tobie Lapin
Alyssa Lurie
Jonathan Lustig
Harris Minstein
Max Oppenheimer
Justin Paul
Ben Paul
Jordan Roth
Jonathan Sarfin
Halle Schulman
Andrew Segal
Nathan Spielberg
Talia Wagner
Rebecca Waller

Hillel Committee

Gariy Ocheretner, Hillel President
Barry Mordukhaev, Hillel
Vice President
Max Behr
Natalie Polzer
Edwin Segal
Steven Snow
Lee Shai Weissbach

Melton Committee

Laura Klein, Chair
Karen Bloom
Steve Bloom
Sandra Harrison
Jon Klein
Robert Sachs
Douglas Sharps
Judah Skolnick

Senior Adult Committee

Estelle Garmon-Chair
Margot Barr
Les Cohen
Jerry Fleischer
Lou Frankel
Roselee Katz
Margot Kling
Rosemary O'Leary
Ruthie Passamaneck
Emily Podgursky
Miriam Sherman
Henny Witzer
Esther Zegart

Jewish Community Relations Council (JCRC)

Leon Wahba, Chair
Marie Abrams
Rabbi David Ariel-Joel
Margot Barr
Betsy Bennett
Amy Garon Benovitz
Carl Bensinger
Judy Berzof
Myrle Davis
Linda Engel
Adam Gallagher
Albert Goldin
Ayala Golding
Marlene Gordon
Lize Goykhberg
Fred Gross
Michael Gross
Philip Grossman
Kyle Kaiman
David Kaplan
Kathleen Karr
Jon Klein
Margot Kling
Helene Kramer Longton
David Leibson

Jennifer Leibson
Udell Levy
Alan Linker
Jessica Loving
Bryan Mathews
Rabbi Stanley Miles
Laurence Nibur
Keiron O'Connell
Rabbi Joe Rapport
Debby Rose
Hank Savitch
Frank Schwartz
Edwin Segal
Steven Shapiro
Amy Shir
Rabbi Robert Slosberg
Jeff Slyn
William Stone
Leni Sweet
Maura Temes
Robert Waterman
Matthew Weinberg

Jewish Community Relations Council Executive Committee

Leon Wahba, Chair
Marie Abrams
Amy Garon Benovitz
Carl Bensinger
Ayala Golding
Philip Grossman
Helene Kramer Longton
Jennifer Leibson
Rabbi Stanley Miles
Hank Savitch
Edwin Segal
Steven Shapiro
William Stone
Maura Temes

IsraelFest Committee

Dafna Schurr
Keren Ben Abu
Idit Heller

Yom HaShoah Committee

Cantor Sharon Hordes, Chair
Fred Gross
Linda Kanter
Cantor David Lipp
Helene Kramer Longton
Rabbi Stan Miles
Dan Penner

Jeff Slyn
Dan Streit
Fred Whitaker

Partnership with Israel Committee

Kathleen Karr, Chair
Philip Rosenbloom, Regional
Medical Task Force Chair
Deborah Amchin
Rabbi David Ariel-Joel
Karen Bloom
Britt Brockman
Richard Goldwin
Robin Goodman
Ralph Green
David Kaplan
Shannon Kederis
Cantor David Lipp
Keith Meador
Rabbi Stanley Miles
Keiron O'Connell
Dr. Mark Perelmutter
Martha Rosenblum
Michael Russman
Dafna Schurr
Steven Shapiro
Heather Yaron

Shalom Ambassadors Committee

Karen Kohn, Co-Chair
Julie Marks, Co-Chair
Sheila Berman
Brant Bloomberg
Meredith Bloomberg
Karen Blue
Todd Blue
Robert Bornstein
Shifrah Bornstein
Hannah Brazin
Leslie Charney
Julie Ciriano
Steve Ciriano
Julie Ellis
Debbie Friedman
Craig Goldstein
Elise Goldstein
Rachel Greenberg
Dana Gregory
Joy Kaplan
Kathleen Karr
Ariel Kronenberg
Faina Kronenberg

Amy Landon
Amy Lapinski
Allan Latts
Kate Latts
Joan Lustig
Hilary Pohn
Alison Roemer
Doug Roemer
Shannon Rothschild
Edward Rothschild, II
Becky Ruby Swansburg
Susan Rudy
Michael Russman
Nikki Russman
Beth Salamon
Michael Salamon
Frank Schramko
Mona Schramko
Brian Segal
Christon Segal
Shane Shaps
Amy Shir
Abby Tasman
Barrett Tasman
Jeffrey Tuvlin
Jennifer Tuvlin
Diane Weinberg
Reed Weinberg
Stephi Wolff

CenterStage Board

Candy Pierce, Chair
Sara Abner
Jon Adams
Angie Aronoff
Dona Boone
Jan Bowling
Chris Bryant
Kristy Calman
Ellie Catlett
Jennifer Diamond
Carol Dines
Eugene Dorf
Nick Duett
Karen Duff
Virginia Evans
Monty Fields
Sandi Friedson
Kim Goldman
Sarah Harlan
Laura Hoke
Jacob Isaac

Barbara Myerson Katz
Mandy Kramer
Casey Leek
Lauren Morelli
Sam Pilotte
Jane Schuster
Matt Schuster
Christy Shircliff
Jamie Shuler
Larry Singer
Jason Tumulty

Festival of the Book Committee

Evie Topcik, Chair
Bari Calderon
Linda Goldberg
Georgia Goldman
Sharon Gould
Raema Green
Diane Levine
Debbie Rose
Marcy Rosengarten
Erin Scianimanico

Jewish Film Festival Committee

Keiley Caster, Chair
Rabbi David Ariel-Joel
Matthew Biberman
Sandra Braunstein
Dara Cohen
Michael Furey
Jan Glaubinger
Angeline Golden
Sharon Goodman
Michelle Jones
Jackie Kanovitz
Meryl Kasdan
Louis Levy
Cantor David Lipp
Pami
Shelly Rifkin
Emilie Shapero
Susan Waterman
Stephi Wolf

Visual Arts Committee

Bette Levy, Gallery Director
Debbie Levine
Jan Collins-Langford
Linda Fuchs
Frima Gelbard
Kay Grubola
Jim Grubola
Bernice Mazin
Marianna Metcalf
Felice Sachs
Ralph Schowe
Joan Stein

Finance Committee

Laurence Nibur, Chair
Ronald Abrams
Ross Cohen
Stuart Goldberg
Allan Latts
Susan Rudy
Leon Wahba
Leonard Wexler

Foundation for Planned Giving Re-establishment Committee

Ronald Abrams
Sheldon Gilman
Stuart Goldberg
Jane Goldstein
David Klein
Bruce Roth
Martin Ruby
Robert Sachs

Foundation for Planned Giving Investment Committee

Glenn Levine, Chair
Edwin Cohen
David Fuchs
Alan Glaubinger
Stuart Goldberg
David Klein
Jay Klemptner
Allan Latts
Laurence Nibur
Mark Switow
Scott Trager
Leon Wahba
Bryan Yoffe



Children listen to a Story Walk during IsraelFest



Volunteers hard at work during Super Sunday.

Jewish Community of Louisville Staff

Senior Administration

Stu Silberman 238-2723
President & Chief Executive Officer
 ssilberman@jewishlouisville.org

Sara Klein Wagner 618-5307
*Senior Vice President &
 Chief Operating Officer*
 swagner@jewishlouisville.org

Jamie Pillsbury 618-5303
*Vice President &
 Chief Financial Officer*
 jpillsbury@jewishlouisville.org

Membership

Brianna Jordan 238-2791
Interim Membership Director
 bjordan@jewishlouisville.org

Programming & Development

Andrea Melendez 238-2725
Program Director
 amelendez@jewishlouisville.org

Marsha Bornstein 238-2731
Festival Director
 mbornstein@jewishlouisville.org

Matt Goldberg 618-5321
*Jewish Community Relations Director
 and Campaign Associate*
 mgoldberg@jewishlouisville.org

Frankye Gordon 238-2735
Fundraising Director
 fgordon@jewishlouisville.org

Kim Hales 238-2777
Special Events & Fundraising Director
 khales@jewishlouisville.org

Julie Hollander 238-2708
Youth and Camp Director
 jhollander@jewishlouisville.org

John R. Leffert 238-2753
CenterStage Artistic Director
 jleffert@jewishlouisville.org

Tzivia Levin 618-5308
*YAD Director, Campaign Associate
 and Hillel Director*
 tlevin@jewishlouisville.org

Becky McKiernan 238-2748
Early Childhood Director
 bmckiernan@jewishlouisville.org

Slava Nelson 238-2743
Senior Adult Program Director
 snelson@jewishlouisville.org

Betsy Prussian 238-2784
Jewish Resource Center Director
 bprussian@jewishlouisville.org

Diane Sadle 238-2749
Senior Adult Director
 dsadle@jewishlouisville.org

Justin Sadle 238-2778
KIO BBYO and Teen Director
 jsadle@jewishlouisville.org

Allison Schwartz 618-5325
Outreach Coordinator, The PJ Library
 aschwartz@jewishlouisville.org

David Siskin 238-2701
Middle School Director
 dsiskin@jewishlouisville.org

Mary Dooley 238-2718
Program and Camp Assistant
 mdooley@jewishlouisville.org

Health & Wellness

Tara Stone 238-2726
Customer Service Director
 tstone@jewishlouisville.org

Ron Peacock 238-2792
Fitness Director
 rpeacock@jewishlouisville.org

Scott Thompson 238-2757
Sports Director
 sthompson@jewishlouisville.org

Liz Stumper 238-2742
Aquatics Director
 lstumper@jewishlouisville.org

Café J Catering

Joyce Craig 238-2744
Catering Manager

Communications and Community Newspaper

Shiela Steinman Wallace 618-5311
*Editor of Community,
 Communications Director*
 swallace@jewishlouisville.org

Ben Goldenberg 618-5336
Marketing Manager 237-2711
 bgoldenberg@jewishlouisville.org

Phyllis C. Shaikun 618-5312
Public Relations Manager
 pshaikun@jewishlouisville.org

Celia Triplett 618-5313
Associate Communications Manager
 ctriplett@jewishlouisville.org

Aaron Leibson 418-5845
Advertising Sales Representative
 aleibson@jewishlouisville.org

Financial and Administrative Services

Corky Horrell 618-5338
Senior Accountant
 chorrell@jewishlouisville.org

Kathy Luxemburger 618-5339
Senior Accountant
 kluxemburger@jewishlouisville.org

Shari Beaven 618-5304
Accountant
 sbeaven@jewishlouisville.org

Melissa Hartmann 618-5305
Accountant
 mhartmann@jewishlouisville.org

Lisa Moorman 618-5306
Human Resources/Payroll
 lmoorman@jewishlouisville.org

Cindy Lewis 238-2722
IT Manager
 clewis@jewishlouisville.org

Administrative Staff

Eloise Stemmle 238-2722
Office Manager/Executive Secretary
 estemmle@jewishlouisville.org

Paula DeWeese 618-5309
Executive Secretary
 pdeweese@jewishlouisville.org

Mary Jean Timmel 618-5309
Secretary
 mtimmel@jewishlouisville.org

Operations and Maintenance

Maintenance & Housekeeping Hotline 238-2717

Brian Tabler 238-2772
Facility Manager
 btabler@jewishlouisville.org

Lindley Able 238-2754
Security Director
 lable@jewishlouisville.org

Larry Bischof
Maintenance
 maintenance@jewishlouisville.org

Sherman Marshall
Maintenance
 maintenance@jewishlouisville.org

John Dillon, III
Grounds
 maintenance@jewishlouisville.org



Some of the JCL staff at Membership Appreciation Day



Jewish Community
 of Louisville

Jewish Community Center • 3600 Dutchmans Lane • Louisville, KY 40205 • (502) 459-0660

Shalom Tower Offices • 3630 Dutchmans Lane • Louisville, KY 40205 • (502) 451-8840